

# AVAILABLE

Adjacent to Livonia Marketplace - Sears  
29500 7 Mile Road, Livonia, MI 48152



## DETAILS

SPACE	373,350 SF
	1-story
LAND AVAILABLE	21 acres
	Immediate Occupancy

ALEX BIERI 313.52.4001 alex@sbre1.com  
JIM BIERI 313.552.4001 jbieri@sbre1.com



# AVAILABLE

Adjacent to Livonia Marketplace - Sears  
29500 7 Mile Road, Livonia, MI 48152



## SITE INFO

This former Sears is located adjacent to the Livonia Marketplace, which is anchored by other big box stores Walmart and Kohl's. The 7 Mile and Middlebelt intersection is also home to a Planet Fitness, Dollar Tree, CVS Pharmacy and Petco.

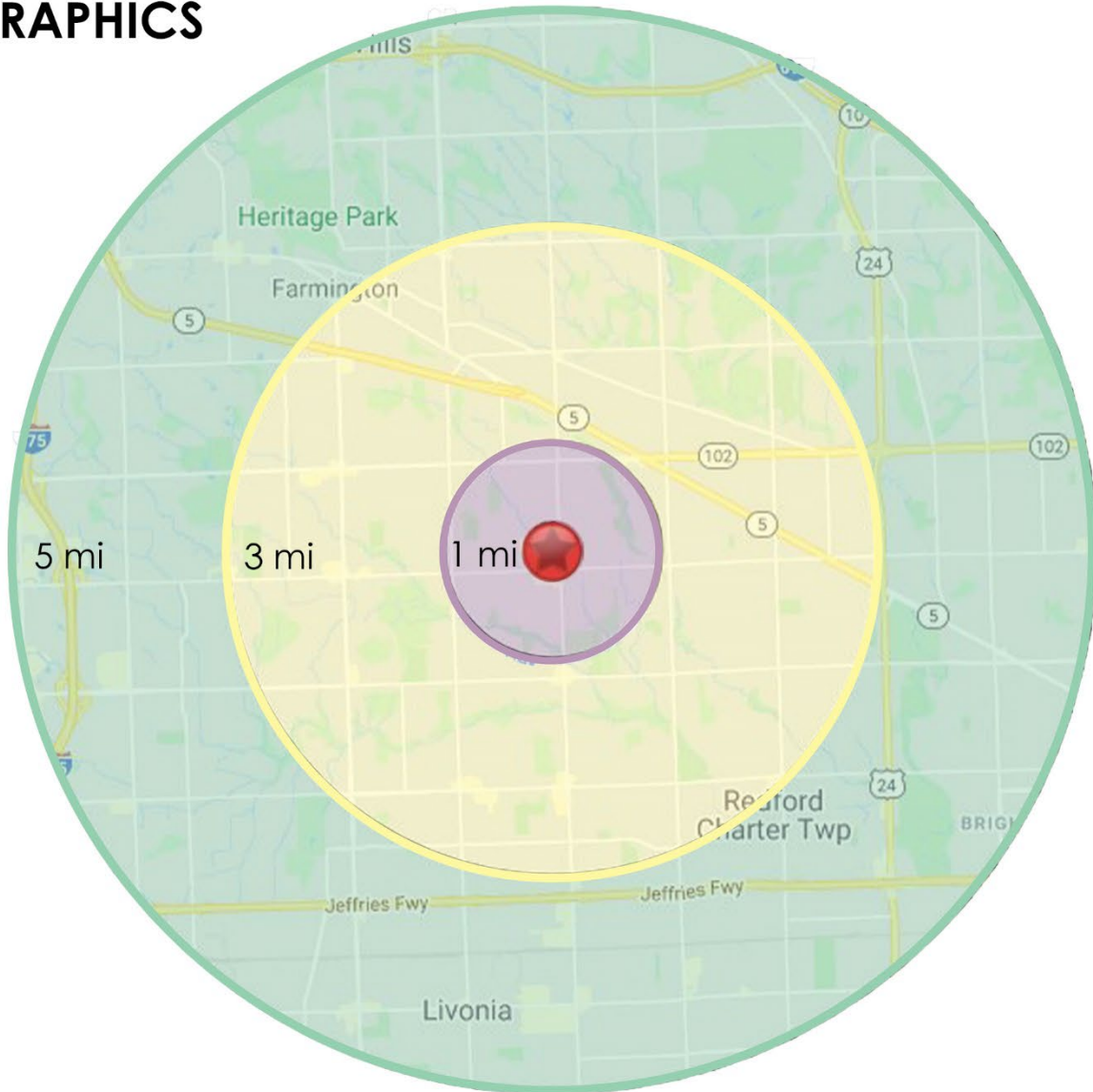
ALEX BIERI 313.52.4001 alex@sbre1.com  
JIM BIERI 313.552.4001 jbieri@sbre1.com



# AVAILABLE

Adjacent to Livonia Marketplace - Sears  
29500 7 Mile Road, Livonia, MI 48152

## DEMOGRAPHICS



Area Demographics	1 Mile	3 Mile	5 Mile
Est Population (2022)	9,637	91,656	233,885
Average HH Income	\$83,634	\$82,709	\$87,741
Households	4,162	38,453	100,059
Median Age	40.6	40.6	40.8

Area Demographics	1 Mile	3 Mile	5 Mile
Total Businesses	363	3,770	10,843
Daytime Population	3,146	30,959	141,441

ALEX BIERI 313.52.4001 alex@sbre1.com  
JIM BIERI 313.552.4001 jbieri@sbre1.com



# AVAILABLE

Adjacent to Livonia Marketplace - Sears  
29500 7 Mile Road, Livonia, MI 48152

## ORIGINAL SITE PLAN



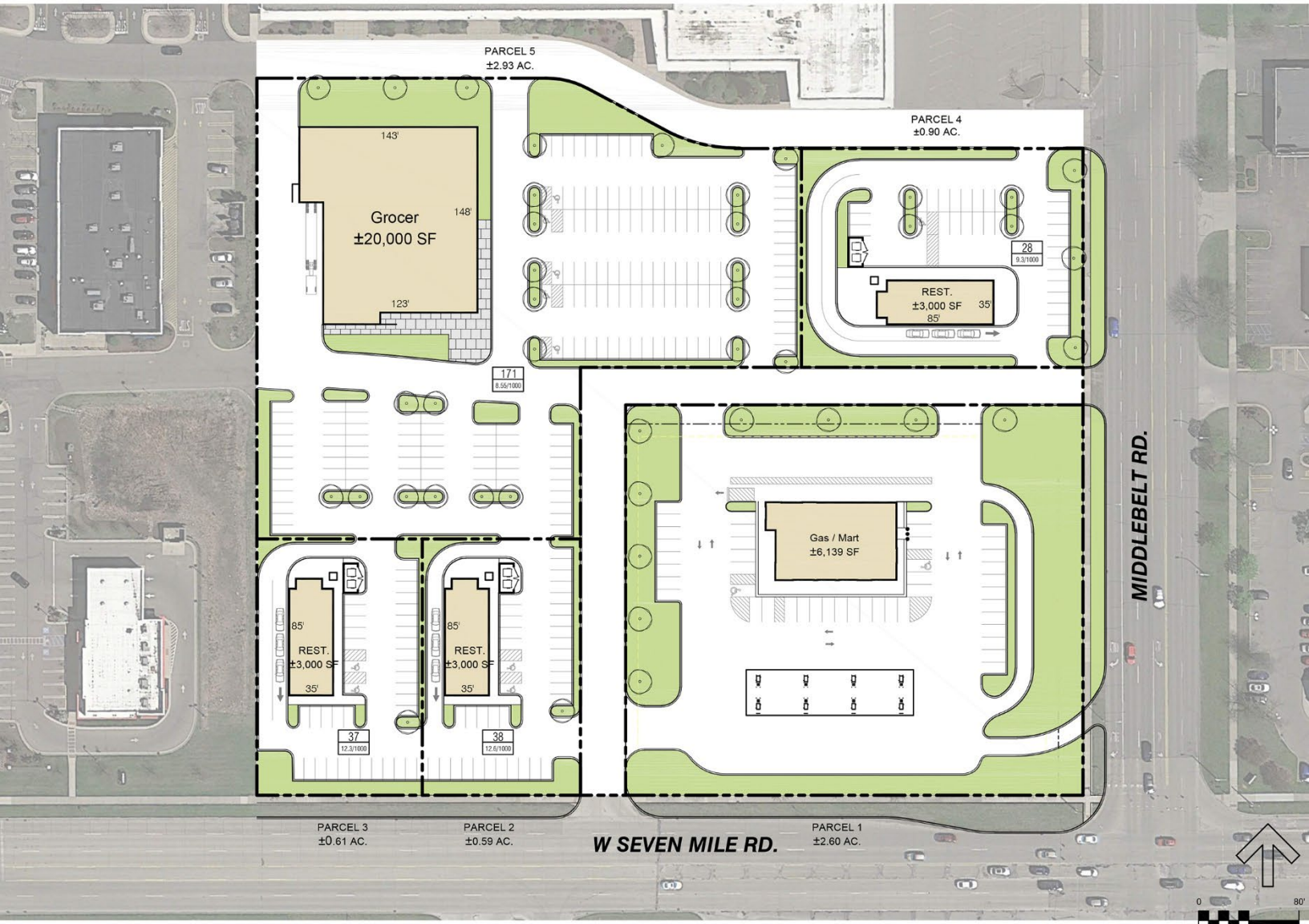
ALEX BIERI 313.52.4001 alex@sbre1.com  
JIM BIERI 313.552.4001 jbieri@sbre1.com



# AVAILABLE

Adjacent to Livonia Marketplace - Sears  
29500 7 Mile Road, Livonia, MI 48152

## PROPOSED SITE PLAN



ALEX BIERI 313.52.4001 alex@sbre1.com  
JIM BIERI 313.552.4001 jbieri@sbre1.com

