

FOR LEASE – PRIME OFFICE/MEDICAL

1595 W Lake Lansing Rd, East Lansing, MI
US 127 & Lake Lansing Rd



DETAILS

SIZE 5,261 sq ft
ASKING RATE Inquire with agent

TRAFFIC COUNTS (VPD)

Lake Lansing Rd 26,567
Coolidge Rd 13,231

DISTANCE TO

Michigan State University 3.2 miles
Michigan State Capitol 4.2 miles

HIGHLIGHTS

- Turnkey furnished 2nd floor office space
- Space can be easily demised
- Prime location - Close proximity to MSU and Capitol building
- Strong co-tenancy mix within center
- Ample natural light from surrounding windows
- Good mix of private offices with open floor plan
- Multiple conference rooms
- Dedicated reception and break room

JOSH ZEID 248.907.0648 jzeid@sbre1.com
SEAN VON SCHWARZ 313.552.4006 sean@sbre1.com



FOR LEASE – PRIME OFFICE/MEDICAL

1595 W Lake Lansing Rd, East Lansing, MI
US 127 & Lake Lansing Rd

AERIAL



COTENANCY:



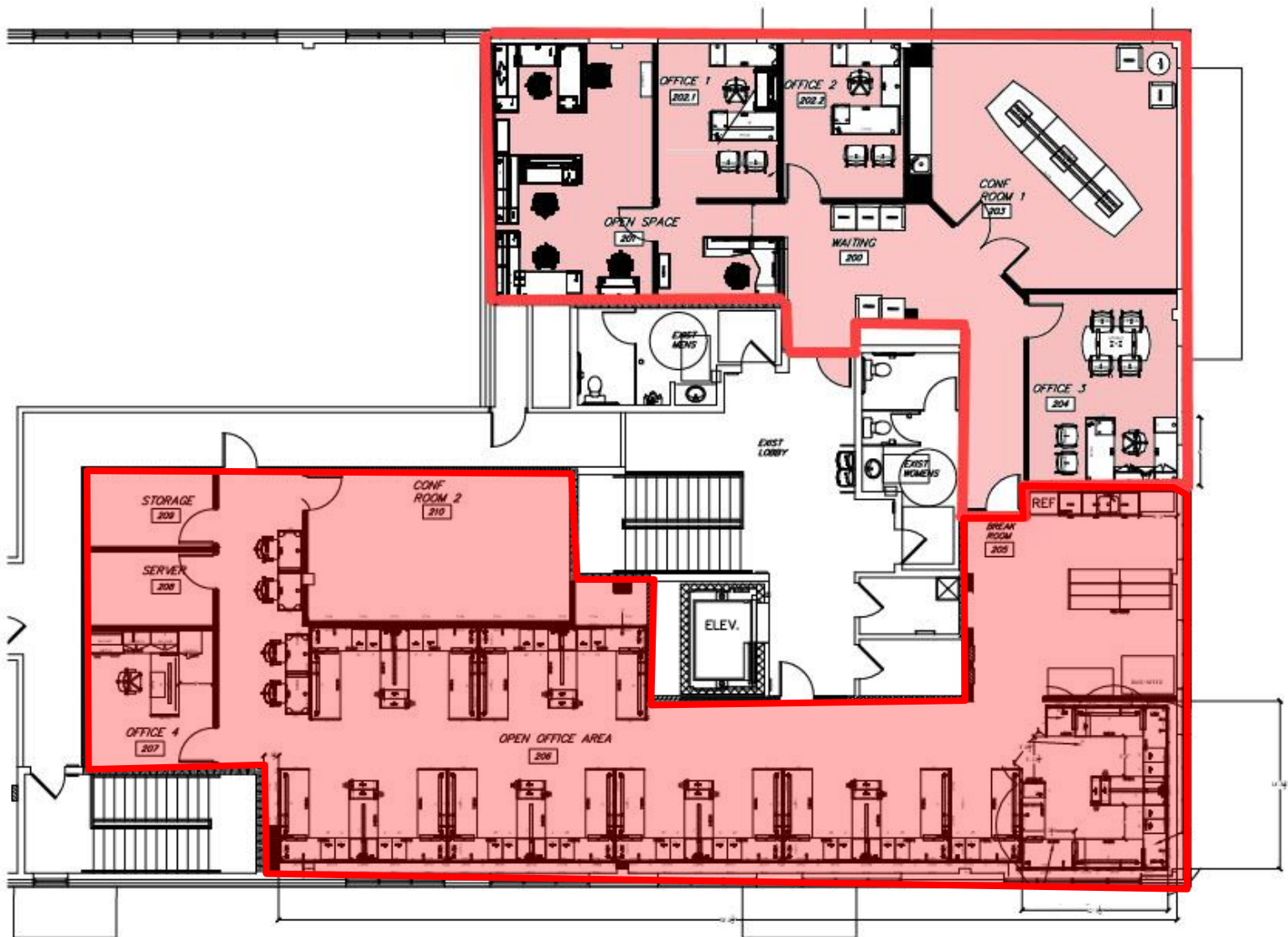
JOSH ZEID 248.907.0648 jzeid@sbre1.com
SEAN VON SCHWARZ 313.552.4006 sean@sbre1.com



FOR LEASE – PRIME OFFICE/MEDICAL

1595 W Lake Lansing Rd, East Lansing, MI
US 127 & Lake Lansing Rd

DEMISED FLOOR PLAN



FOR LEASE – PRIME OFFICE/MEDICAL

1595 W Lake Lansing Rd, East Lansing, MI
US 127 & Lake Lansing Rd

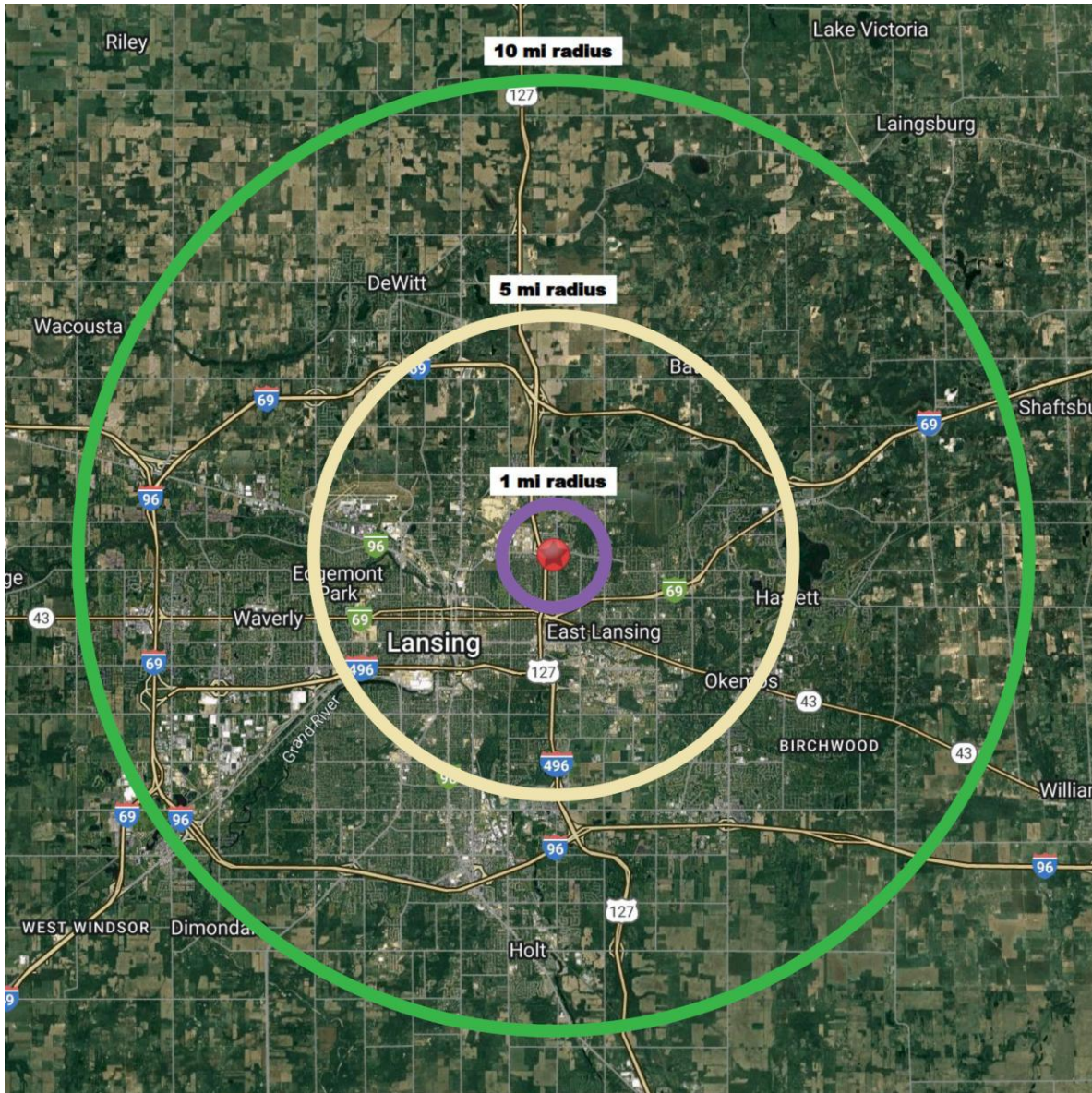
PHOTOS



FOR LEASE – PRIME OFFICE/MEDICAL

1595 W Lake Lansing Rd, East Lansing, MI
US 127 & Lake Lansing Rd

DEMOGRAPHICS



Area Demographics	3 Miles	5 Miles	10 Miles
Est Population (2025)	85,611	159,876	322,915
Average HH Income	\$81,489	\$83,875	\$95,821
Households	33,790	65,846	134,780
Median Age	29.2	31.8	35.0

Area Demographics	3 Miles	5 Miles	10 Miles
Total Businesses	2,949	5,442	10,871
Daytime Population	39,829	76,093	140,974

JOSH ZEID 248.907.0648 jzeid@sbre1.com
SEAN VON SCHWARZ 313.552.4006 sean@sbre1.com

