

# PAD AVAILABLE

Fashion Square Mall, Former TGI Fridays

2775 Tittabawassee Rd, Saginaw, MI 48604



## DETAILS

SPACE: +/- 8,188 SF

ACRES: 1.95 Acres



ALEX BIERI 313.552.4002 [alex@sbre1.com](mailto:alex@sbre1.com)

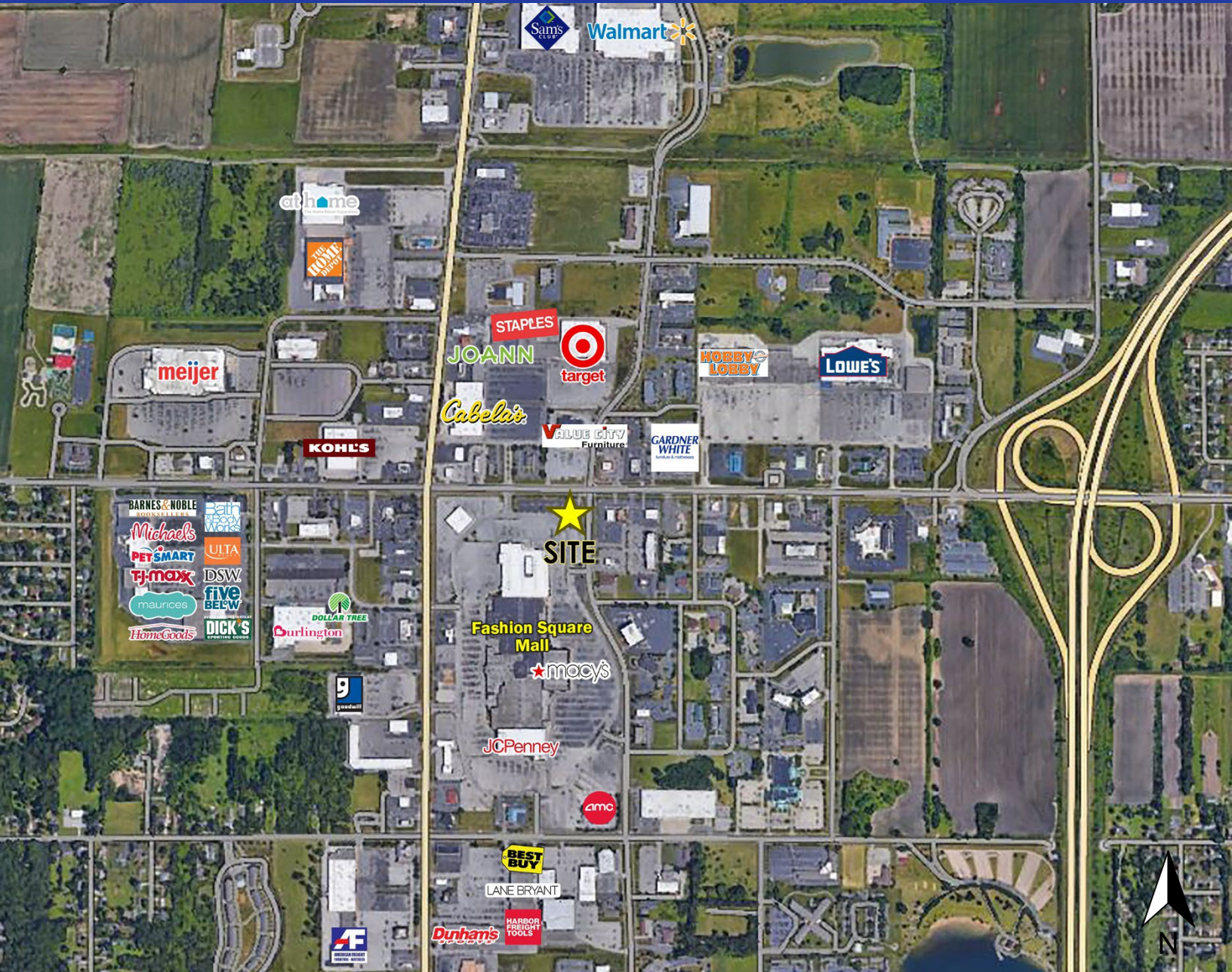
JIM BIERI 313.552.4001 [jbieri@sbre1.com](mailto:jbieri@sbre1.com)



# PAD AVAILABLE

Fashion Square Mall, Former TGI Fridays

2775 Tittabawassee Rd, Saginaw, MI 48604



## SITE INFO

The former TGIF outparcel at the Fashion Square Mall in Saginaw, MI is available. The visibility of this restaurant pad is outstanding, and the site is easily accessible. The Fashion Square Mall has a total of 796,018 SF of space. The mall's major anchors are Macy's and JCPenney's, and is surrounded by an AMC movie theater, Kohl's, Cabela's, Meijer, and shopping centers including stores such as T.J. Maxx, Lowe's, Target and Five Below.

ALEX BIERI 313.552.4002 [alex@sbre1.com](mailto:alex@sbre1.com)

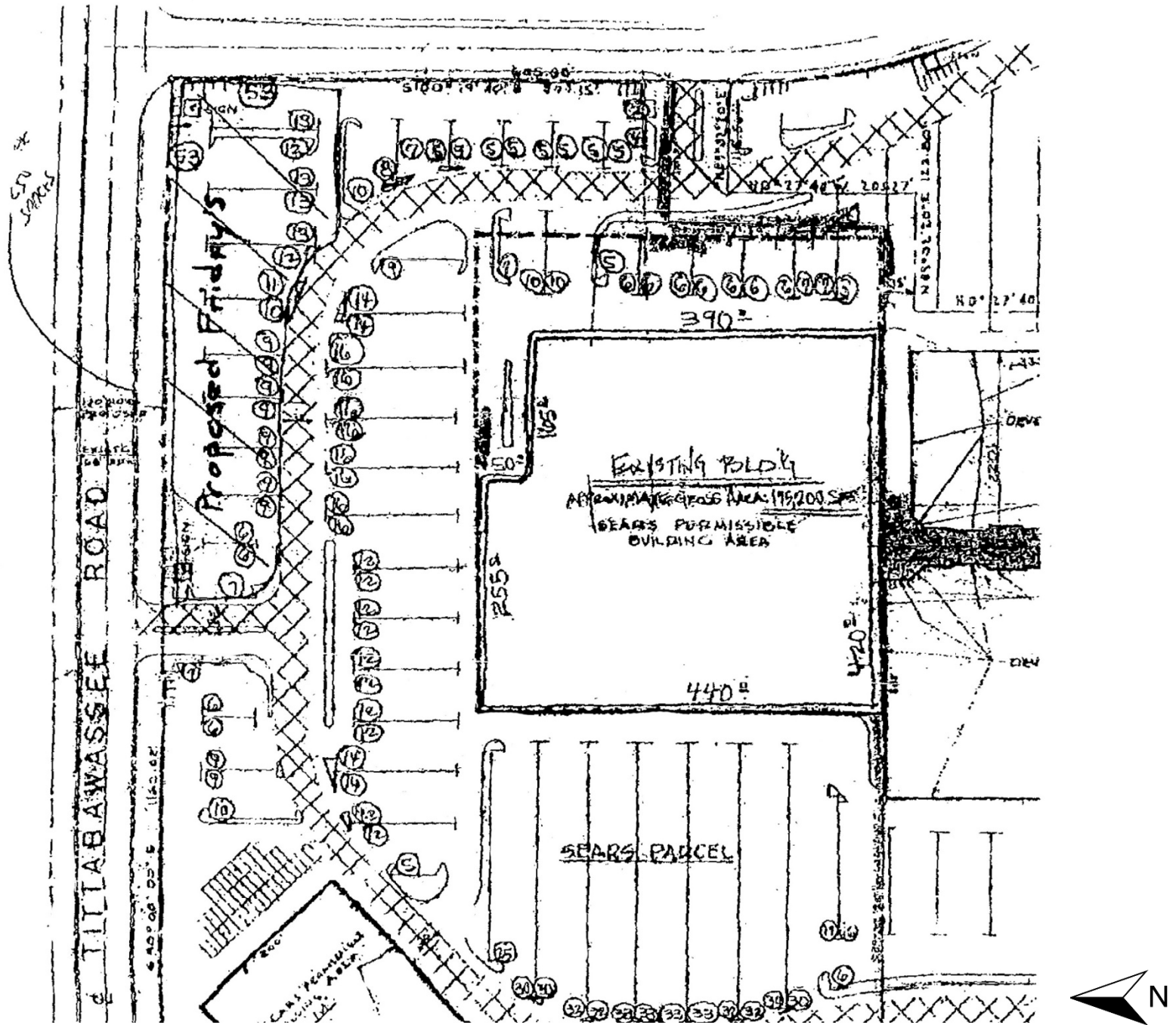
JIM BIERI 313.552.4001 [jbieri@sbre1.com](mailto:jbieri@sbre1.com)



# PAD AVAILABLE

Fashion Square Mall, Former TGI Fridays  
2775 Tittabawassee Rd, Saginaw, MI 48604

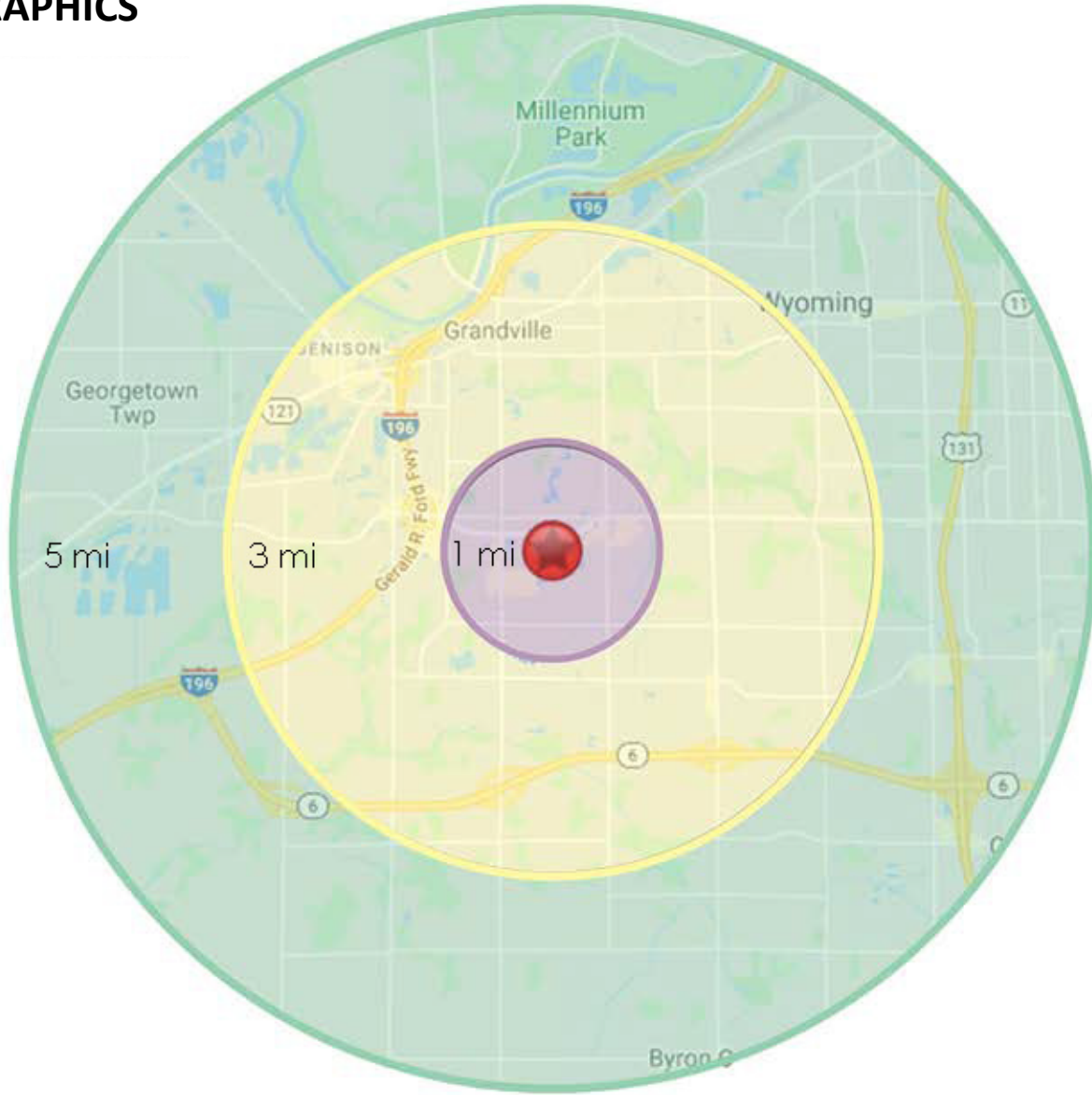
## SITE PLAN



# PAD AVAILABLE

Fashion Square Mall, Former TGI Fridays  
2775 Tittabawassee Rd, Saginaw, MI 48604

## DEMOGRAPHICS



Area Demographics	1 Mile	3 Miles	5 Miles
Est Population (2024)	2,049	35,966	86,023
Average HH Income	\$97,725	\$88,782	\$89,887
Households	1,108	14,942	36,492
Median Age	36.0	37.4	37.9

Area Demographics	1 Mile	3 Miles	5 Miles
Total Businesses	628	1,490	3,107
Daytime Population	8,910	21,718	44,085

ALEX BIERI 313.552.4002 [alex@sbre1.com](mailto:alex@sbre1.com)  
JIM BIERI 313.552.4001 [jbieri@sbre1.com](mailto:jbieri@sbre1.com)

