

# MEDICAL SPACE AVAILABLE

27776 Woodward Ave, Royal Oak, MI



## DETAILS

**RETAIL SPACE** 3,824 SF

## TRAFFIC COUNTS (VPD)

Woodward Ave 104,360

Catalpa Dr 8,016

11 Mile Rd 11,887

**LEASE RATE** Inquire with agent

## HIGHLIGHTS

- Stand alone building on Woodward Ave
- Fully built out medical office
- 21 dedicated + 9 municipal parking spaces
- Sinks and windows in every exam room
- High visibility signage on Woodward Ave
- Outstanding traffic counts
- Strong cotenant mix including: Trader Joes, Ulta Beauty, Westborn Market, Vinsetta Garage, PetSmart, Sherwin-Williams

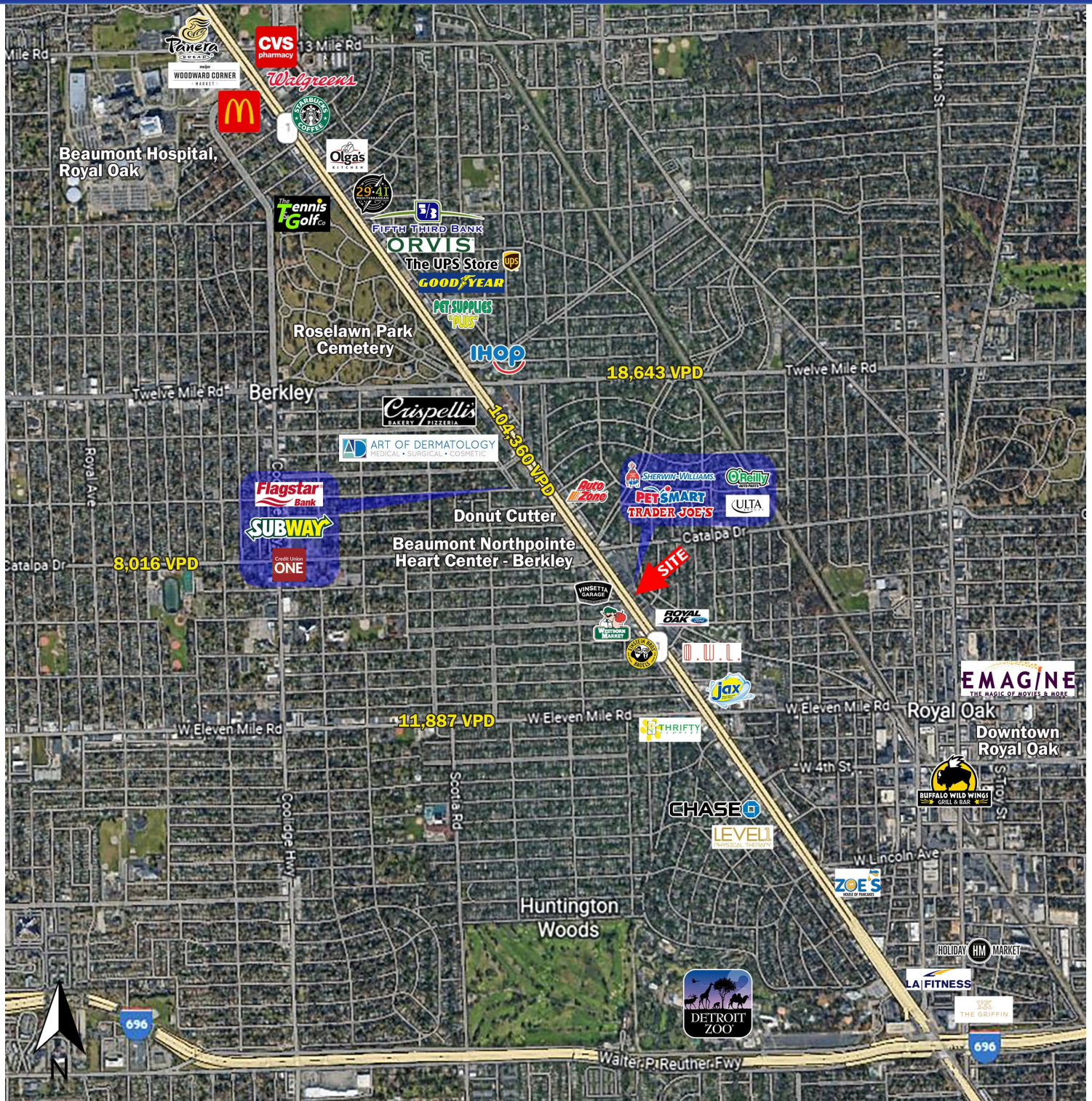
**JOSH ZEID** 248.496.0768 [jzeid@sbre1.com](mailto:jzeid@sbre1.com)





# MEDICAL SPACE AVAILABLE

27776 Woodward Ave, Royal Oak, MI



JOSH ZEID 248.496.0768 [jzeid@sbre1.com](mailto:jzeid@sbre1.com)



# MEDICAL SPACE AVAILABLE

27776 Woodward Ave, Royal Oak, MI

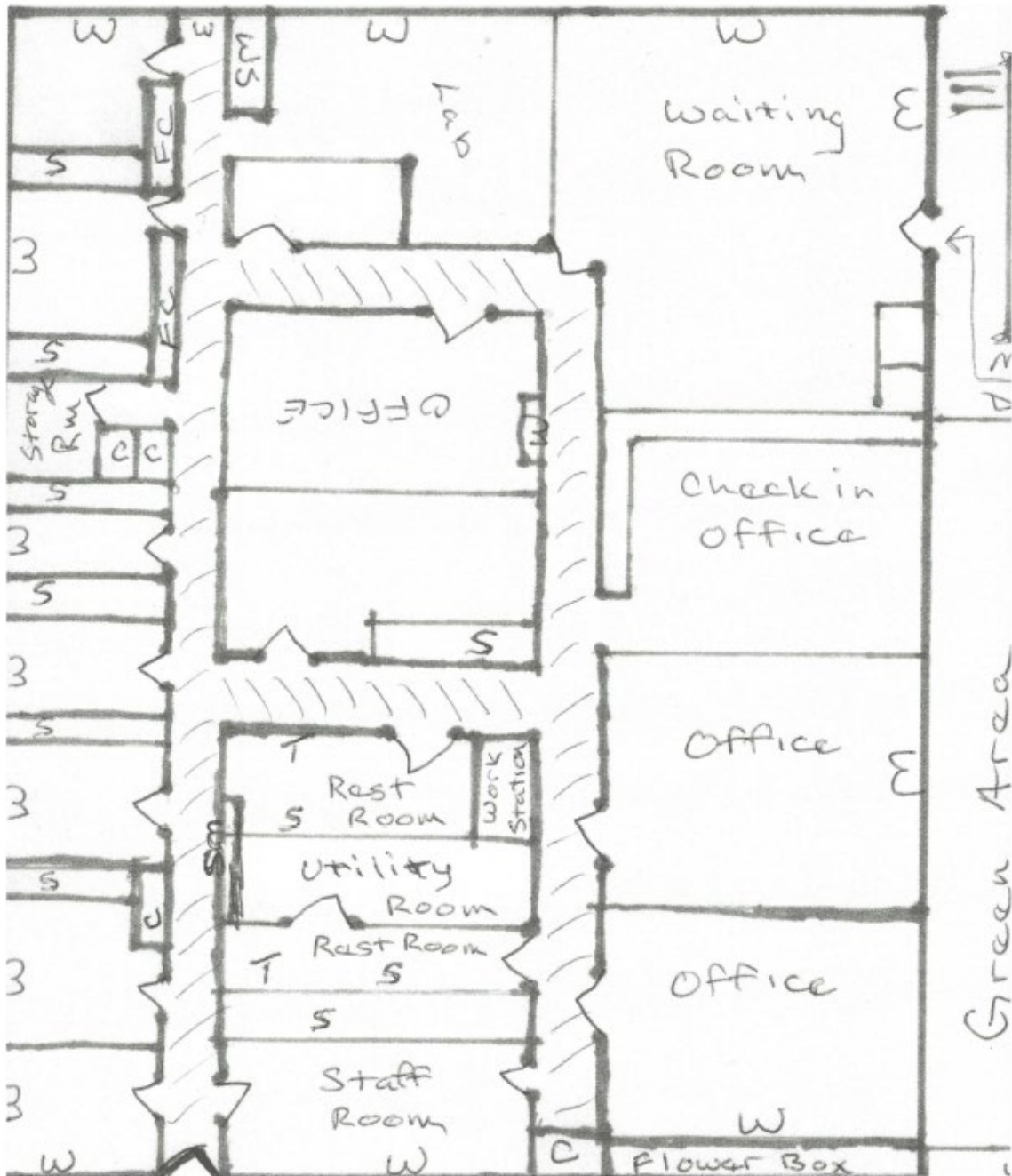
## PHOTOS



# MEDICAL SPACE AVAILABLE

27776 Woodward Ave, Royal Oak, MI

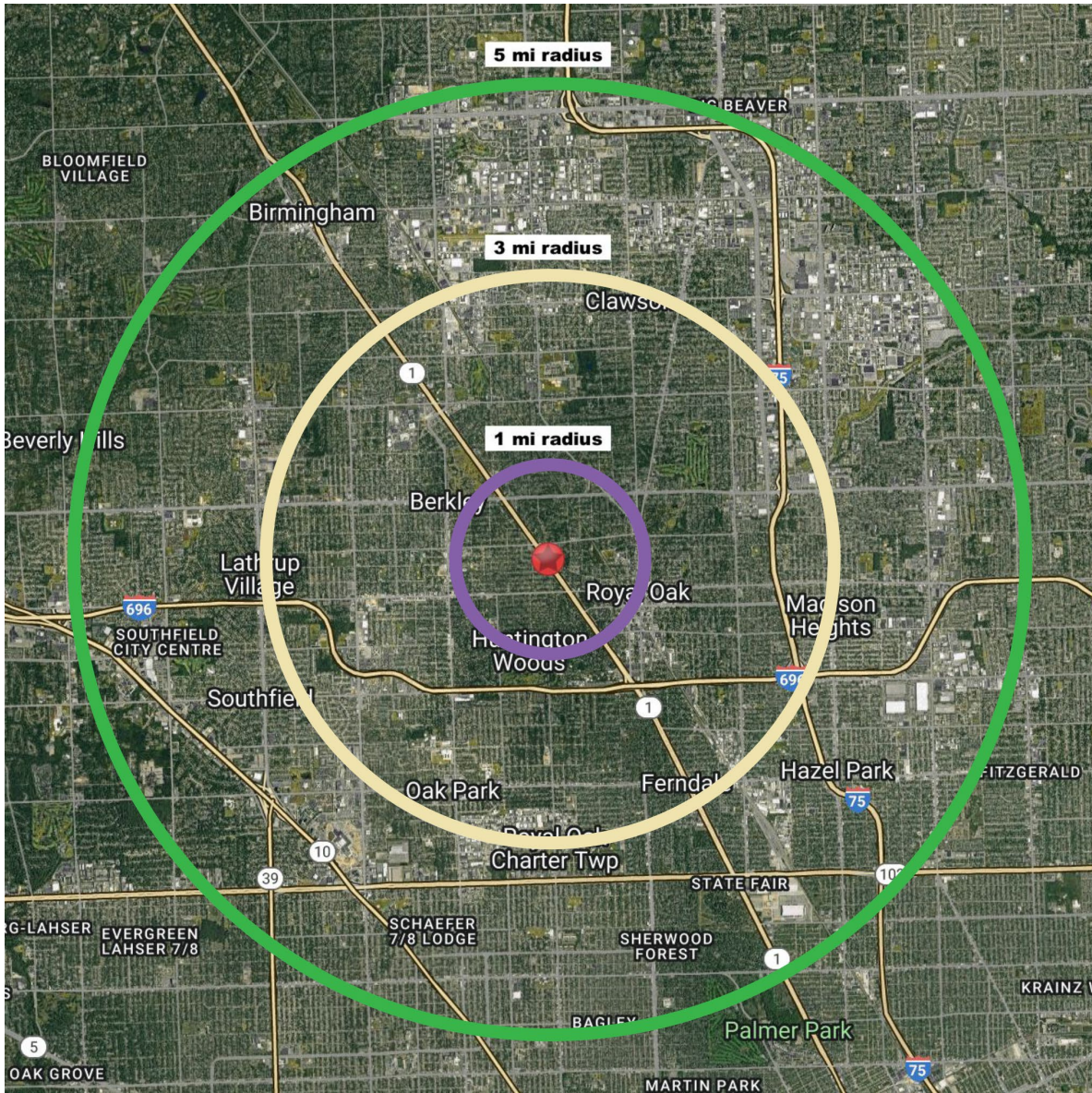
## FLOOR PLAN



# MEDICAL SPACE AVAILABLE

27776 Woodward Ave, Royal Oak, MI

## DEMOGRAPHICS



Area Demographics	1 Mile	3 Miles	5 Miles	Area Demographics	1 Mile	3 Miles	5 Miles
Est Population (2023)	17,115	142,025	338,943	Total Businesses	826	7,074	22,355
Average HH Income	\$170,149	\$128,967	\$120,754	Daytime Population	6,398	60,499	261,793
Households	7,711	65,478	150,805				
Median Age	39.0	39.1	40.8				

JOSH ZEID 248.496.0768 [jzeid@sbre1.com](mailto:jzeid@sbre1.com)

