

# AVAILABLE – STAND ALONE RETAIL

29732 Woodward Ave, Royal Oak, MI



## DETAILS

**RETAIL SPACE** 2,880 SF

## TRAFFIC COUNTS (VPD)

Woodward Ave 104,360

12 Mile Rd 18,643

13 Mile Rd 36,515

**PRICE** Inquire with agent

## HIGHLIGHTS

- Former retail store available for lease
- Well-maintained building with ample parking
- 13 dedicated + 5 municipal parking spaces
- Open floorplan and tall ceilings allow for variety of uses
- High visibility signage on Woodward Ave
- Strong area demographics
- Good traffic flow on Woodward

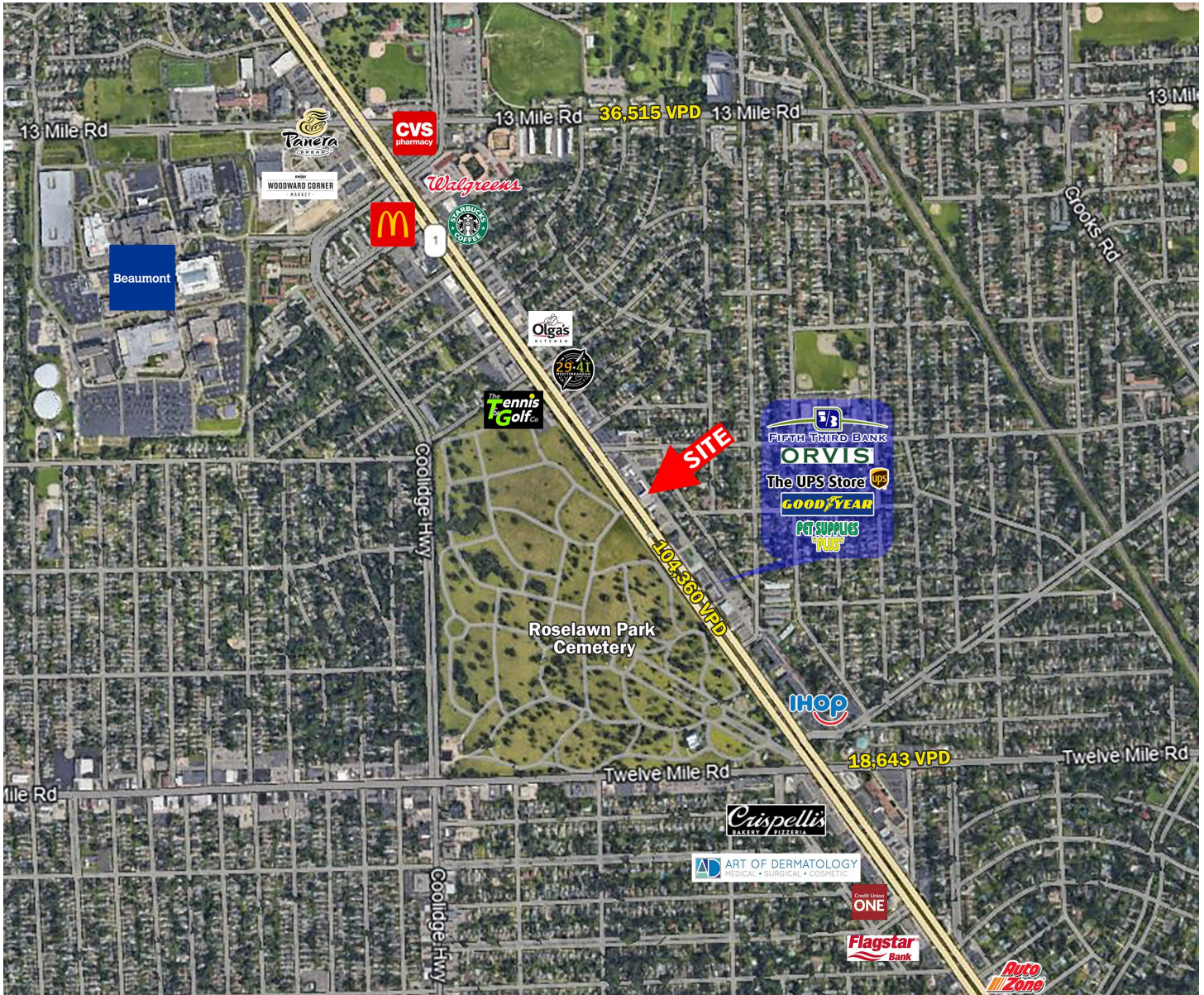
**JOSH ZEID** 248.496.0768 [jzeid@sbre1.com](mailto:jzeid@sbre1.com)



# AVAILABLE – STAND ALONE RETAIL

29732 Woodward Ave, Royal Oak, MI

## LOW AERIAL



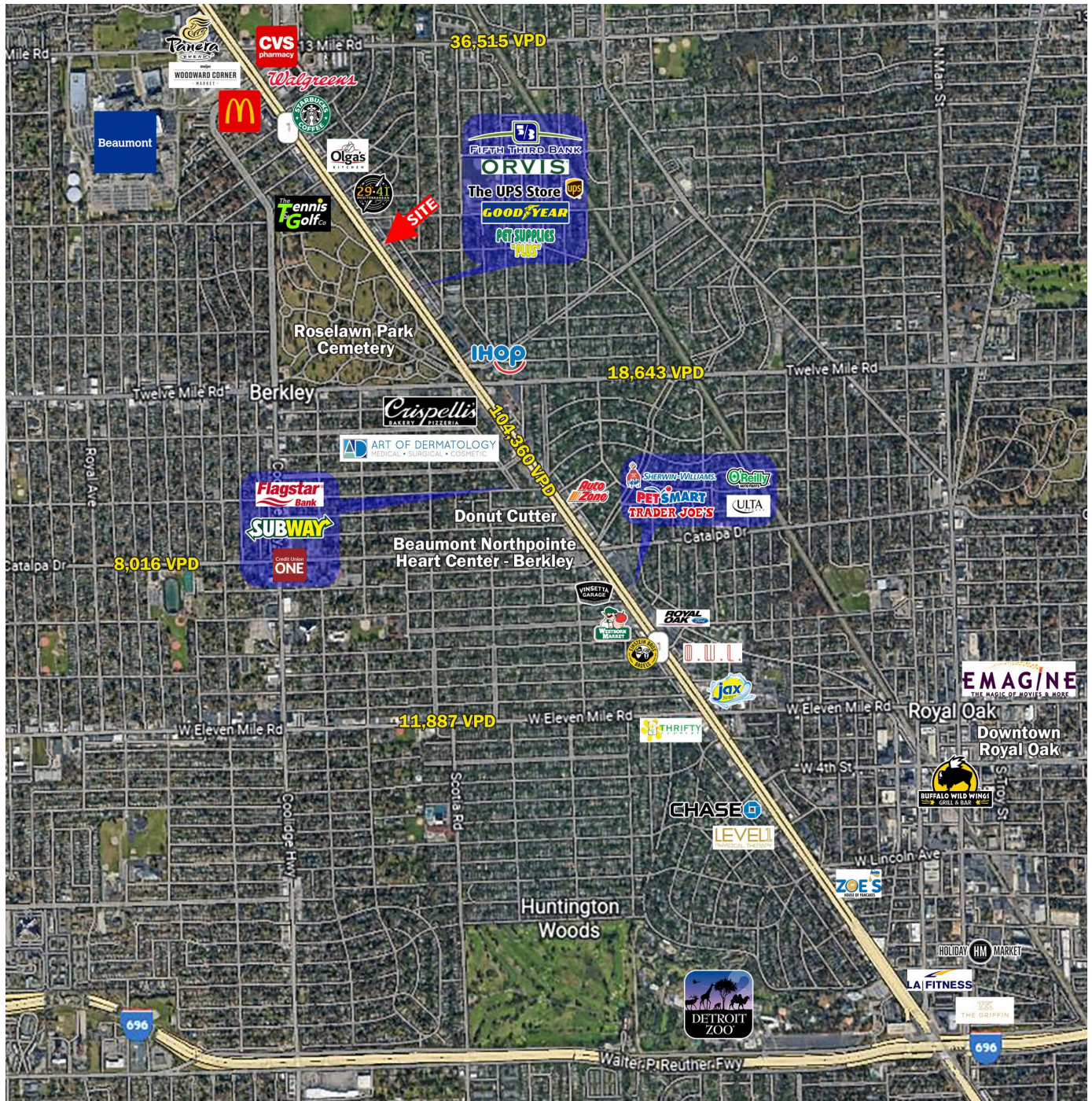
JOSH ZEID 248.496.0768 [jzeid@sbre1.com](mailto:jzeid@sbre1.com)



# AVAILABLE – STAND ALONE RETAIL

29732 Woodward Ave, Royal Oak, MI

## HIGH AERIAL



JOSH ZEID 248.496.0768 [jzeid@sbre1.com](mailto:jzeid@sbre1.com)



# AVAILABLE – STAND ALONE RETAIL

29732 Woodward Ave, Royal Oak, MI

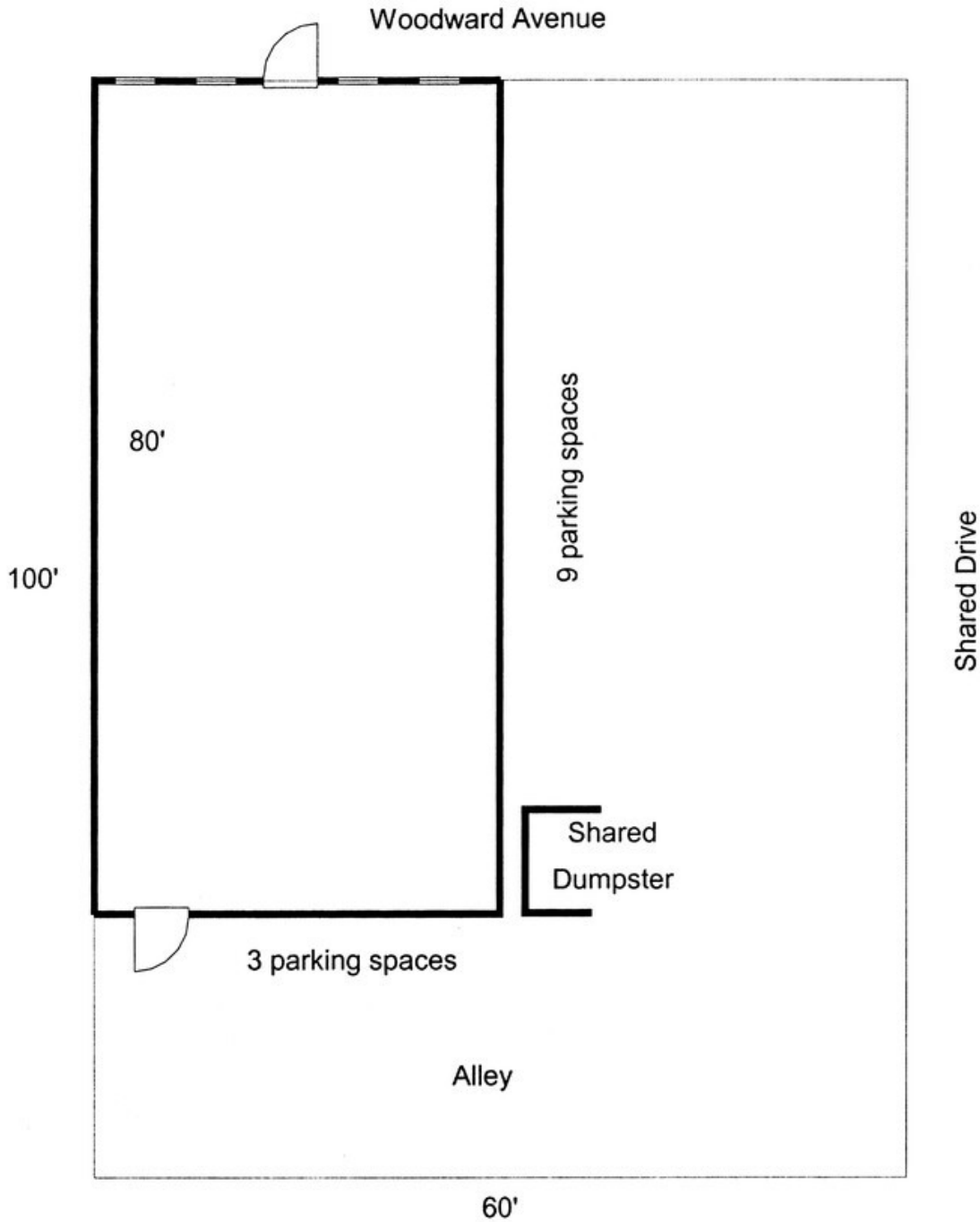
## INTERIOR PHOTOS



# AVAILABLE – STAND ALONE RETAIL

29732 Woodward Ave, Royal Oak, MI

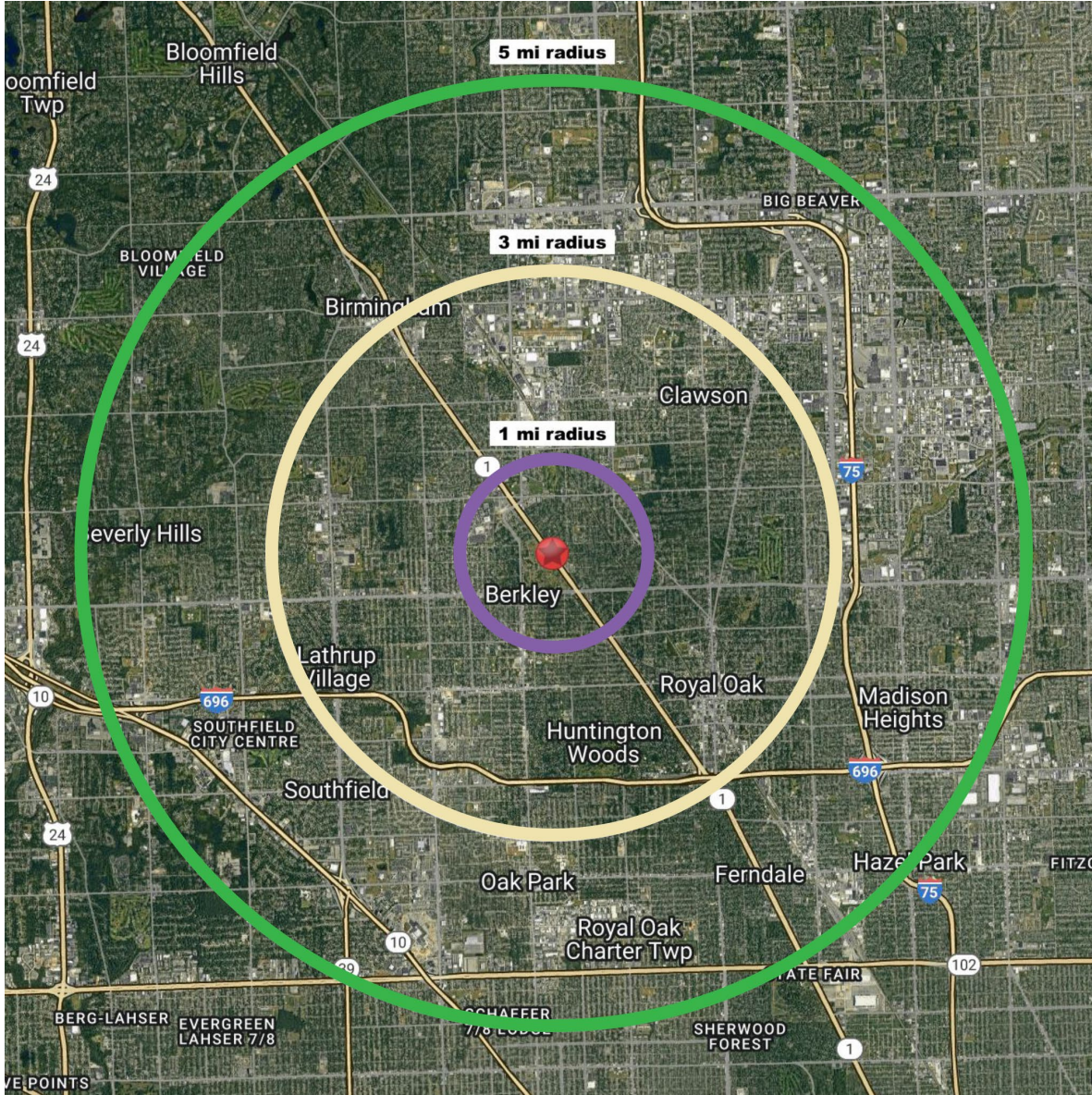
## SITE PLAN



# AVAILABLE – STAND ALONE RETAIL

29732 Woodward Ave, Royal Oak, MI

## DEMOGRAPHICS



Area Demographics	1 Mile	3 Miles	5 Miles	Area Demographics	1 Mile	3 Miles	5 Miles
Est Population (2023)	14,903	132,987	305,453	Total Businesses	791	7,552	21,647
Average HH Income	\$136,123	\$142,525	\$137,020	Daytime Population	5,114	76,079	267,451
Households	6,997	61,249	136,947				
Median Age	40.3	39.8	41.2				

JOSH ZEID 248.496.0768 [jzeid@sbre1.com](mailto:jzeid@sbre1.com)

