

LAND AVAILABLE FOR SALE - \$60K

Former Sears Redevelopment

6730 S River Rd, Marine City, MI 48039



DETAILS

SPACE 3 Acres
AVAILABLE Immediate
ZONED B-2: General Business District
Retail, office, service establishments, hotels, banks, churches, and entertainment

TRAFFIC COUNT (VPD) River Rd 8,900

ASKING PRICE \$60,000



SITE INFO

Marine City, on the beautiful St. Clair River, offers an array of entertainment from antique stores to kayaking—all with a freighter view. Adjacent co-tenancy to the site are Tractor Supply Company, Riverside Cinemas, Techno Cure Computers & Video Games, and VG's Grocery.

ALEX BIERI 313.552.4002 alex@sbre1.com

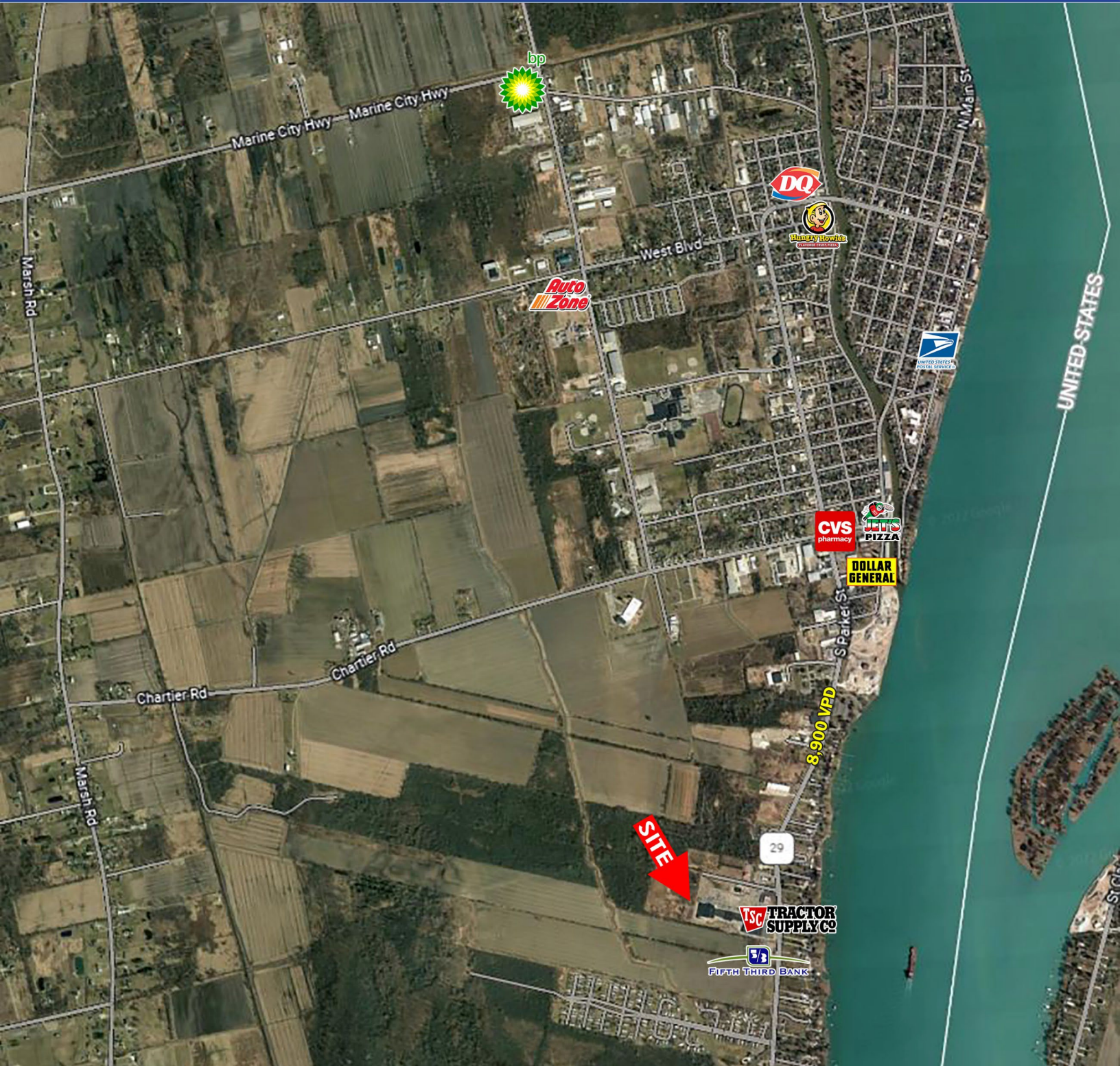
JIM BIERI 313.552.4001 jbieri@sbre1.com



LAND AVAILABLE FOR SALE - \$60K

Former Sears Redevelopment

6730 S River Rd, Marine City, MI 48039



ALEX BIERI 313.552.4002 alex@sbre1.com

JIM BIERI 313.552.4001 jbieri@sbre1.com

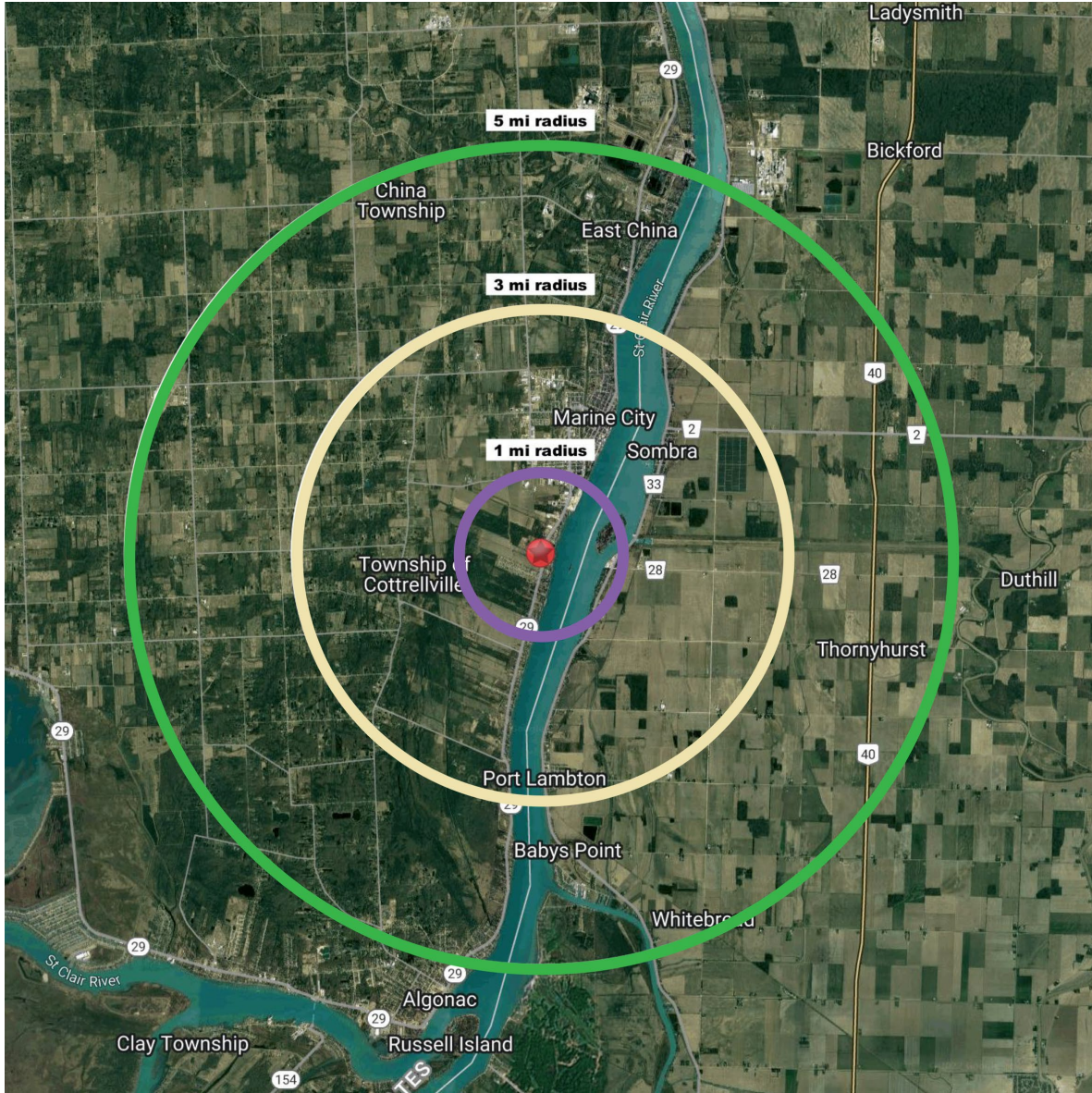


LAND AVAILABLE FOR SALE - \$60K

Former Sears Redevelopment

6730 S River Rd, Marine City, MI 48039

DEMOGRAPHICS



Area Demographics	1Mile	3 Mile	5 Mile
Est Population (2022)	899	7,073	13,851
Average HH Income	\$60,628	\$73,454	\$75,768
Households	388	3,064	5,802
Median Age	44.0	44.1	45.3

Area Demographics	1Mile	3 Mile	5 Mile
Total Businesses	46	274	368
Daytime Population	405	2,516	3,542

ALEX BIERI 313.552.4002 alex@sbre1.com

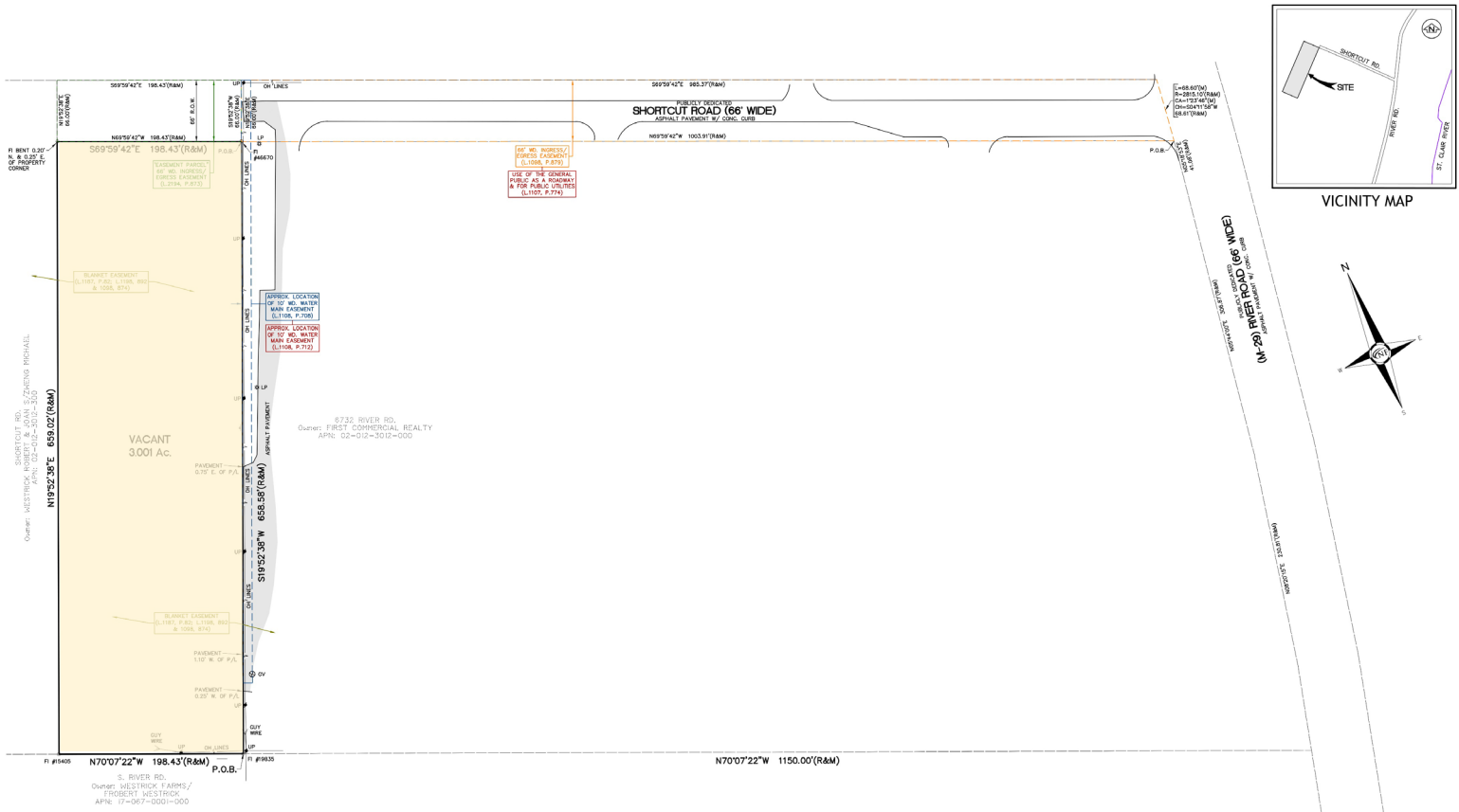
JIM BIERI 313.552.4001 jbieri@sbre1.com



LAND AVAILABLE FOR SALE - \$60K

Former Sears Redevelopment
6730 S River Rd, Marine City, MI 48039

SITE PLAN



3 Acres 198.43' x 659.02'

ALEX BIERI 313.552.4002 alex@sbre1.com
JIM BIERI 313.552.4001 jbieri@sbre1.com

