

MEDICAL RETAIL SPACE AVAILABLE

The Mid

3750 Woodward Ave., Detroit, MI 48201



DETAILS

CO-LIVING RETAIL

23,480 SF

AVAILABLE

Fall 2023

TRAFFIC COUNT (VPD)

Woodward Ave 34,672

Mack Ave 16,369



JIM BIERI 313.552.4001 jbieri@sbre1.com

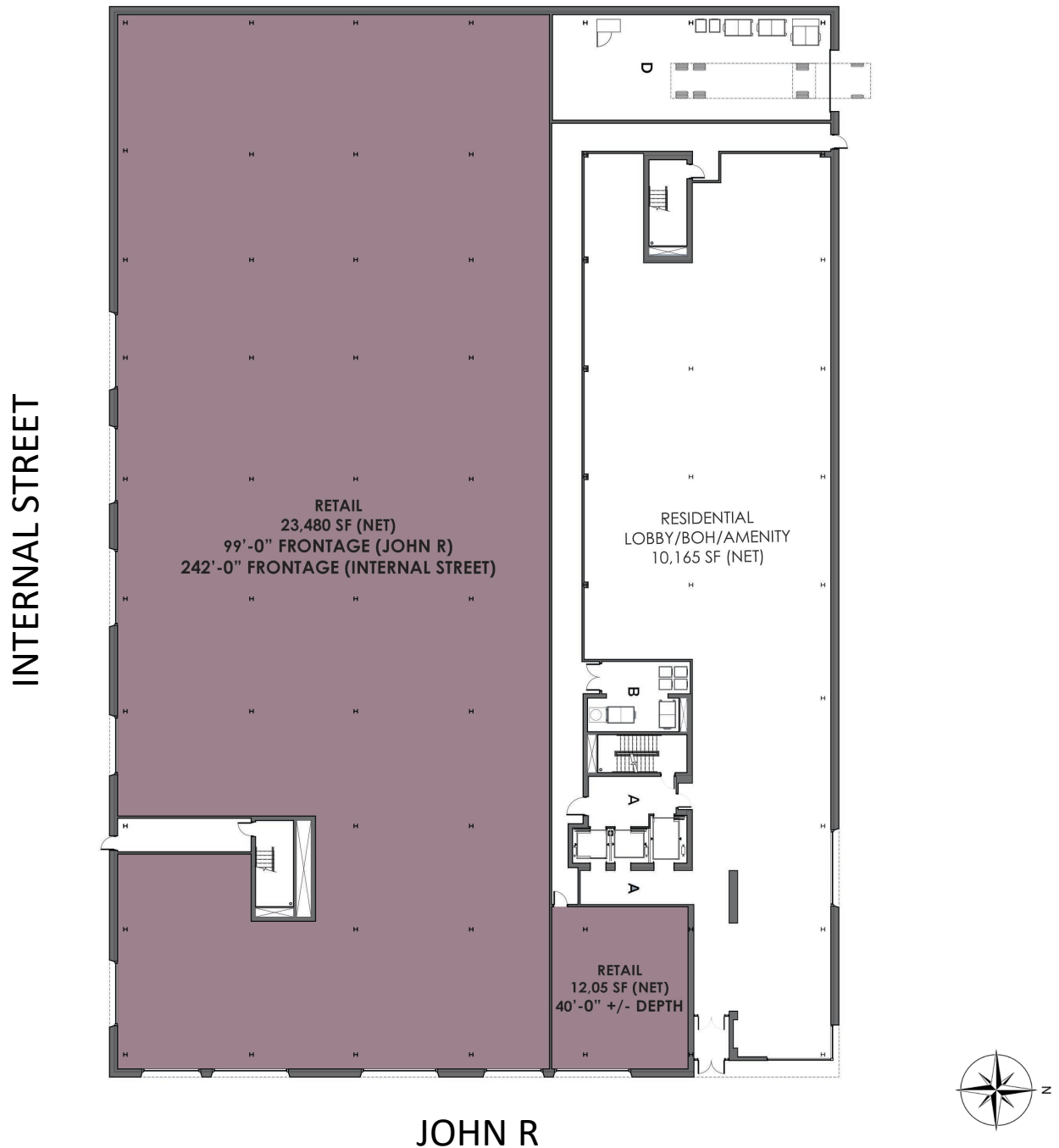


MEDICAL RETAIL SPACE AVAILABLE

The Mid

3750 Woodward Ave., Detroit, MI 48201

SITE PLAN – FLOOR PLAN CO-LIVING LEVEL 1



MEDICAL RETAIL SPACE AVAILABLE

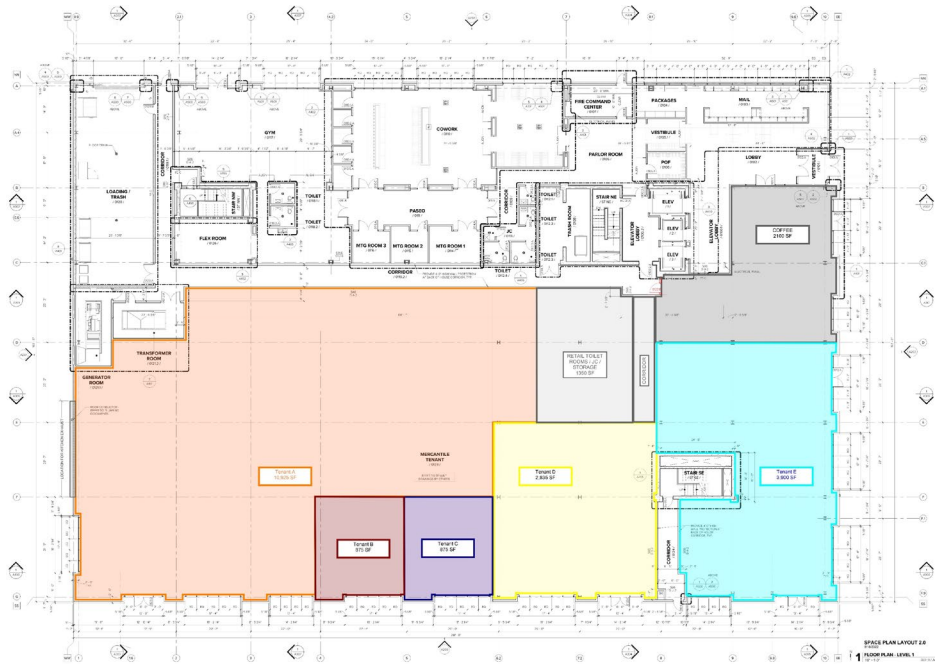
The Mid

3750 Woodward Ave., Detroit, MI 48201

FLOOR PLAN OPTIONS – CO-LIVING LEVEL 1

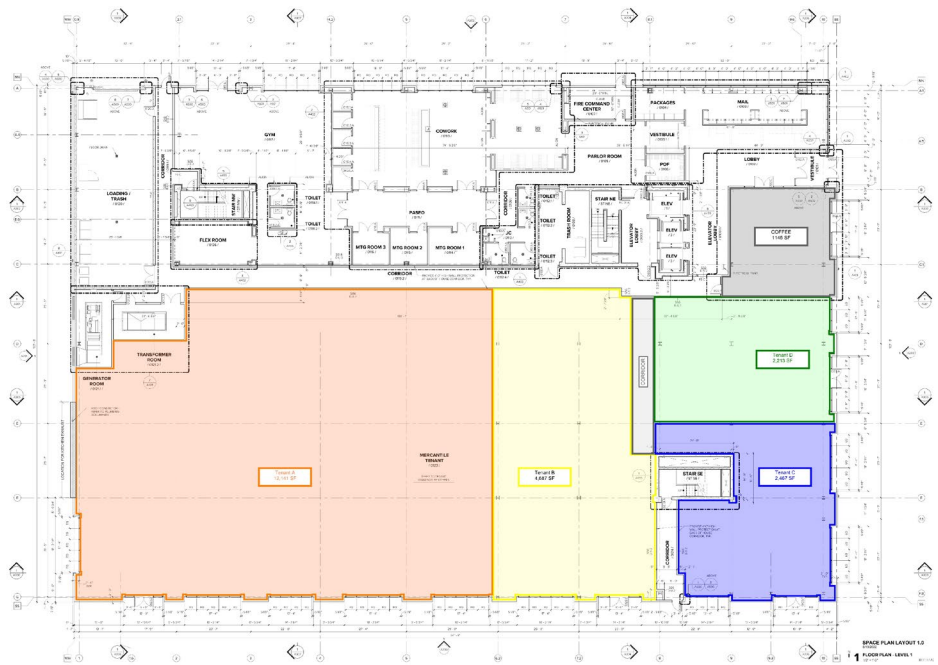
OPTION A

Tenant A	10,925 SF
Tenant B	875 SF
Tenant C	875 SF
Tenant D	2,835 SF
Tenant E	3,900 SF
Coffee	2,100 SF



OPTION B

Tenant A	12,141 SF
Tenant B	4,687 SF
Tenant C	2,467 SF
Tenant D	2,213 SF
Coffee	1,145 SF



MEDICAL RETAIL SPACE AVAILABLE

The Mid

3750 Woodward Ave., Detroit, MI 48201

MACRO AERIAL

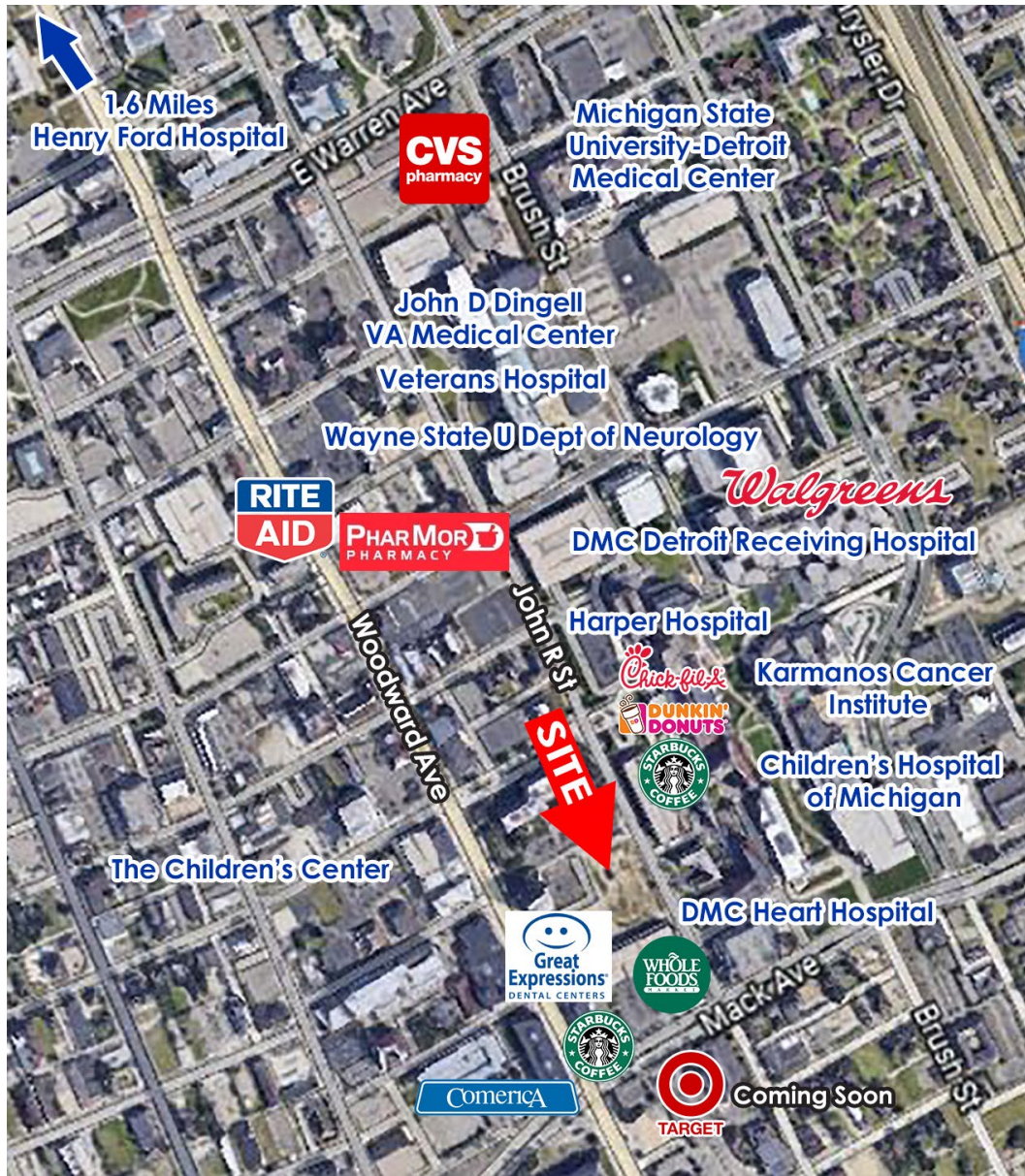


MEDICAL RETAIL SPACE AVAILABLE

The Mid

3750 Woodward Ave., Detroit, MI 48201

MICRO AERIAL



SITE INFO

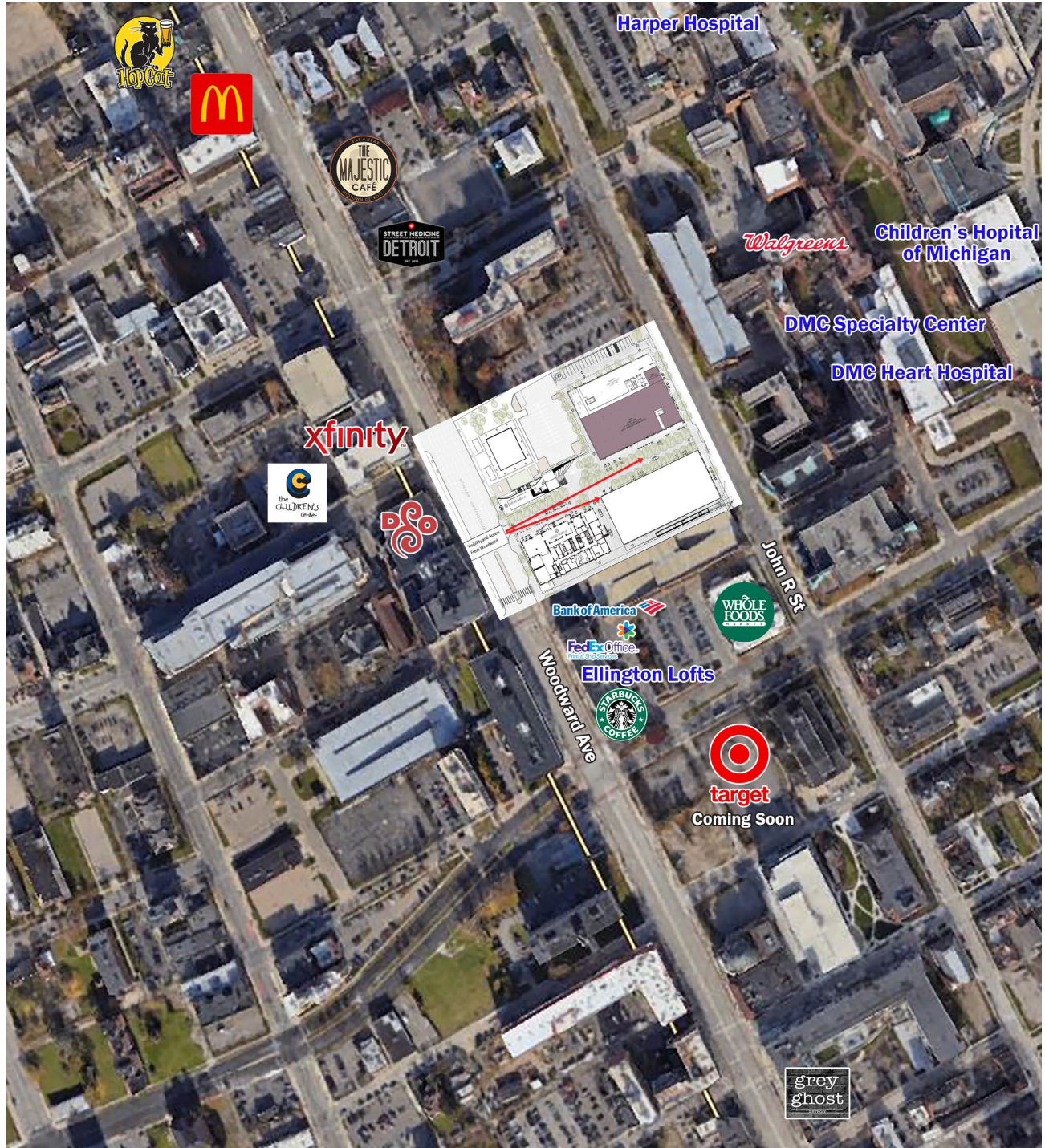
The Mid is a mixed-use redevelopment project in the heart of Detroit's medical district. On John R, directly across from VA Hospital, Harper Hospital, Karmanos Cancer Center and Children's Hospital. Located in Midtown, Detroit, home to Wayne State University and a thriving residential population. Close to downtown Detroit, Brush Park, Corktown, New Center and Eastern Market.

MEDICAL RETAIL SPACE AVAILABLE

The Mid

3750 Woodward Ave., Detroit, MI 48201

MICRO AERIAL WITH SITE PLAN



JIM BIERI 313.552.4001 jbieri@sbre1.com

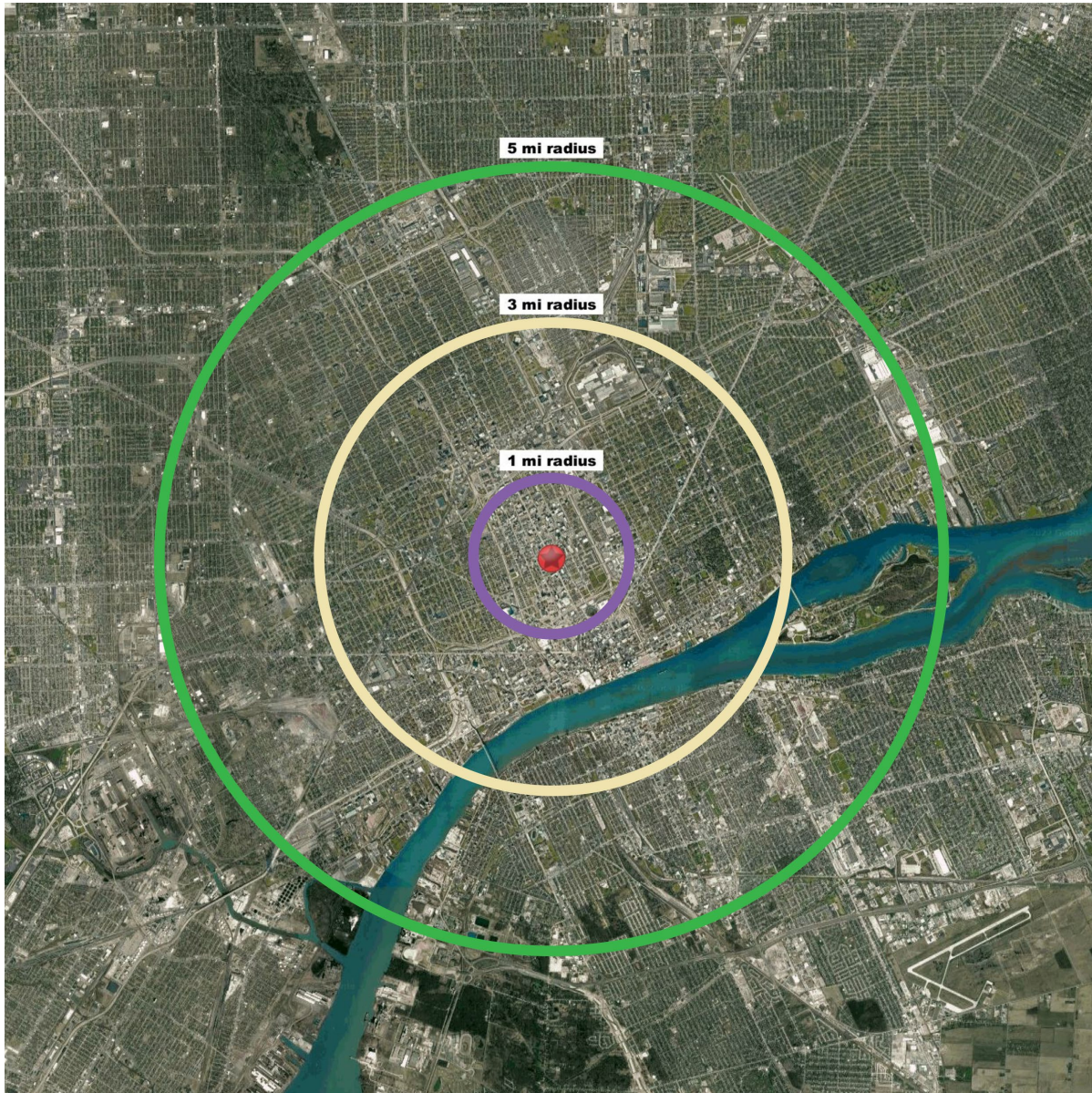


MEDICAL RETAIL SPACE AVAILABLE

The Mid

3750 Woodward Ave., Detroit, MI 48201

DEMOGRAPHICS



Area Demographics	1Mile	3 Mile	5 Mile
Est Population (2021)	21,466	97,068	245,058
Average HH Income	46,487	55,245	54,084
Households	10,603	46,460	100,729
Median Age	34.7	38	36.1

Area Demographics	1Mile	3 Mile	5 Mile
Total Businesses	1,277	6,632	10,450
Daytime Population	37,330	141,023	191,010

JIM BIERI 313.552.4001 jbieri@sbre1.com

