

AVAILABLE

Rivertown Crossings, Former Sears

3622 Rivertown Parkway, Grandville, MI 49418



DETAILS

SPACE: 138,050 SF

ACRES: 12 Acres

AVAILABILITY: 2 ~60,000 SF Spaces

(Divisible Floor Plan Options Available)

ALEX BIERI 313.552.4002 alex@sbre1.com

JIM BIERI 313.552.4001 jbieri@sbre1.com



AVAILABLE

Rivertown Crossings, Former Sears

3622 Rivertown Parkway, Grandville, MI 49418



SITE INFO

The former Sears property is in the Rivertown Crossings Mall, which besides Sears is anchored by Dick's Sporting Goods, JCPenney, Kohl's and Macy's. This is a vibrant retail area, with several other strip and shopping centers lining Rivertown Parkway such as the Wilson Town Center, Grandville Marketplace, Bucktown and Rivertown Center. Rivertown Crossings is also sandwiched between big box stores Meijer and Costco, with a Walmart just across the freeway.

ALEX BIERI 313.552.4002 alex@sbre1.com

JIM BIERI 313.552.4001 jbieri@sbre1.com

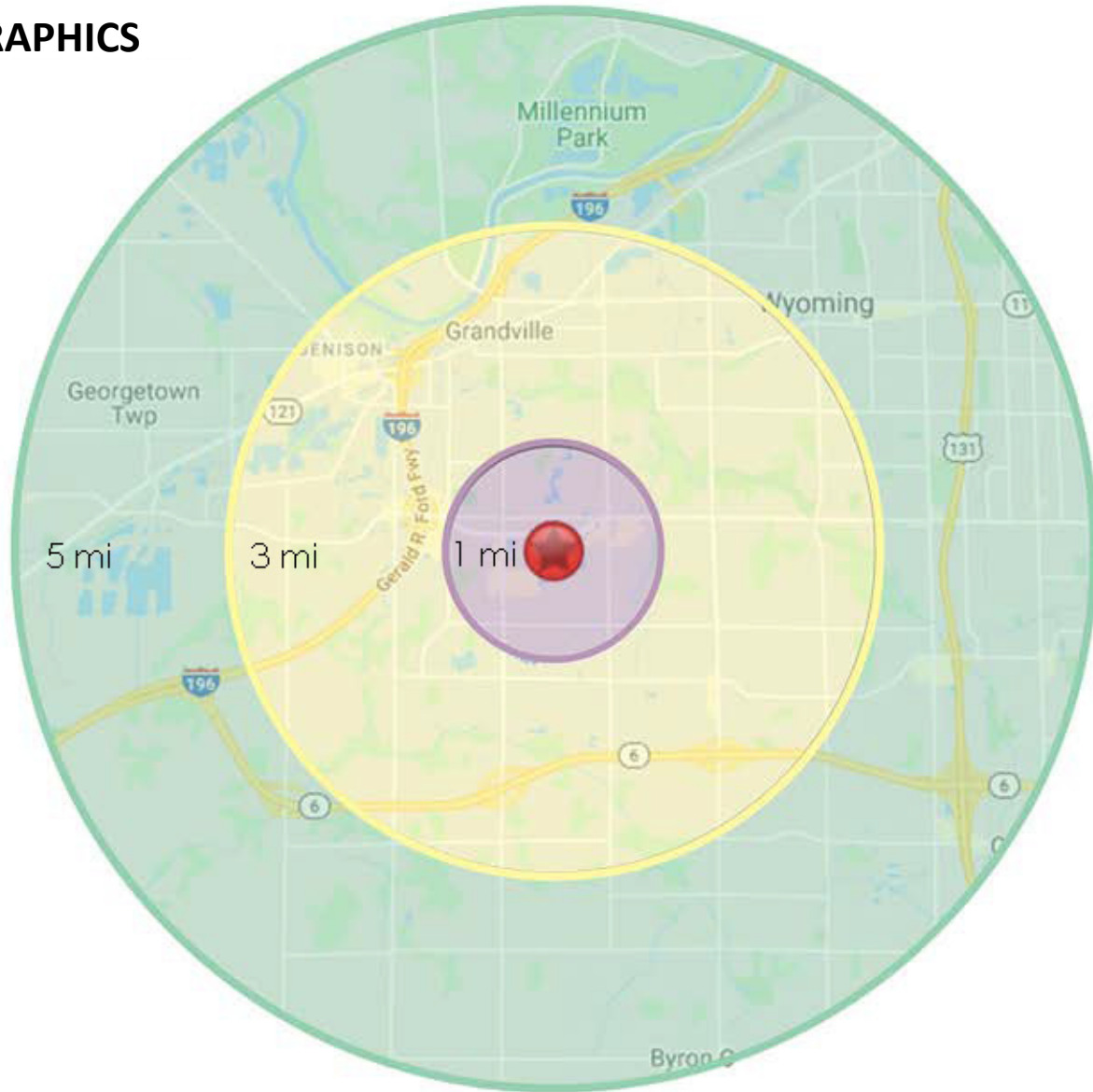


AVAILABLE

Rivertown Crossings, Former Sears

3622 Rivertown Parkway, Grandville, MI 49418

DEMOGRAPHICS



Area Demographics	1Mile	3 Mile	5 Mile
Est Population (2022)	6,819	62,712	146,861
Average HH Income	\$107,031	\$81,291	\$79,164
Households	2,655	24,850	56,241
Median Age	39.5	35.9	36.1

Area Demographics	1Mile	3 Mile	5 Mile
Total Businesses	403	2,295	4,875
Daytime Population	5,467	24,947	59,646

ALEX BIERI 313.552.4002 alex@sbre1.com
JIM BIERI 313.552.4001 jbieri@sbre1.com



AVAILABLE

Rivertown Crossings, Former Sears

3622 Rivertown Parkway, Grandville, MI 49418

SITE PLAN



ALEX BIERI 313.552.4002 alex@sbre1.com

JIM BIERI 313.552.4001 jbieri@sbre1.com

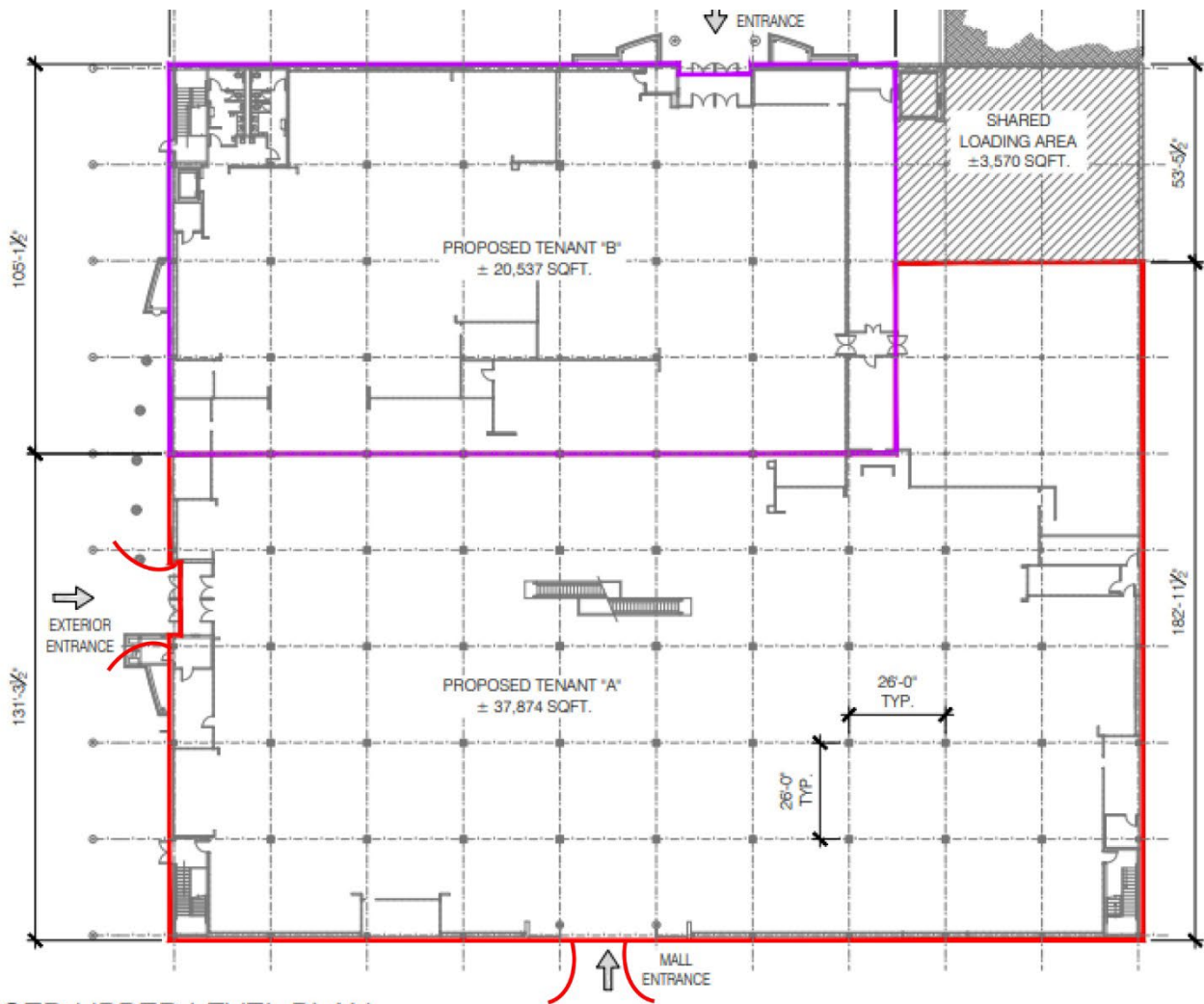


AVAILABLE

Rivertown Crossings, Former Sears

3622 Rivertown Parkway, Grandville, MI 49418

PROPOSED FIRST FLOOR PLAN 1



1 PROPOSED UPPER LEVEL PLAN
LOD1



SCALE: NTS

ALEX BIERI 313.552.4002 alex@sbre1.com
JIM BIERI 313.552.4001 jbieri@sbre1.com

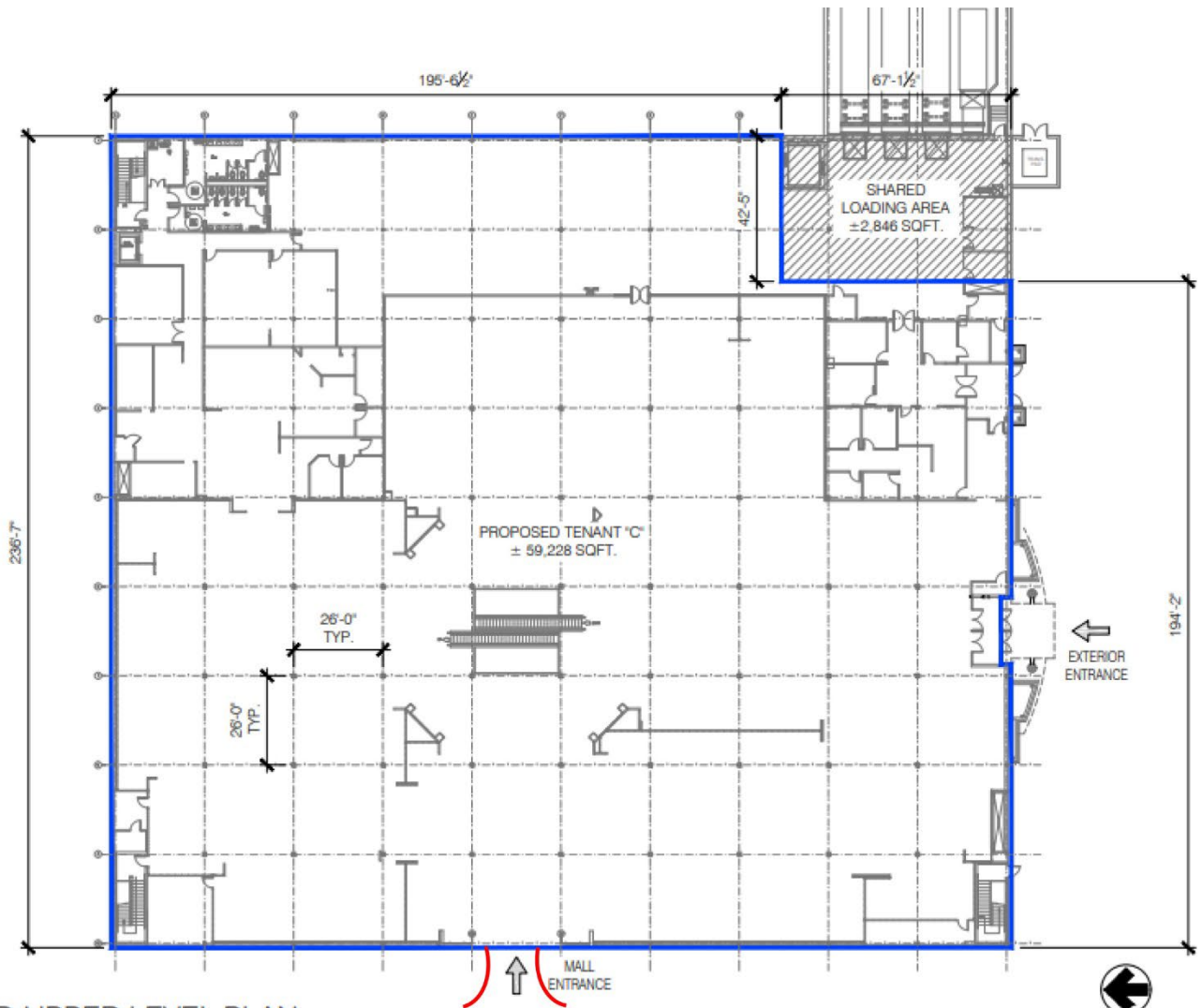


AVAILABLE

Rivertown Crossings, Former Sears

3622 Rivertown Parkway, Grandville, MI 49418

PROPOSED SECOND FLOOR PLAN 1



1 PROPOSED UPPER LEVEL PLAN
LOD2

NORTH
SCALE: NTS

ALEX BIERI 313.552.4002 alex@sbre1.com
JIM BIERI 313.552.4001 jbieri@sbre1.com

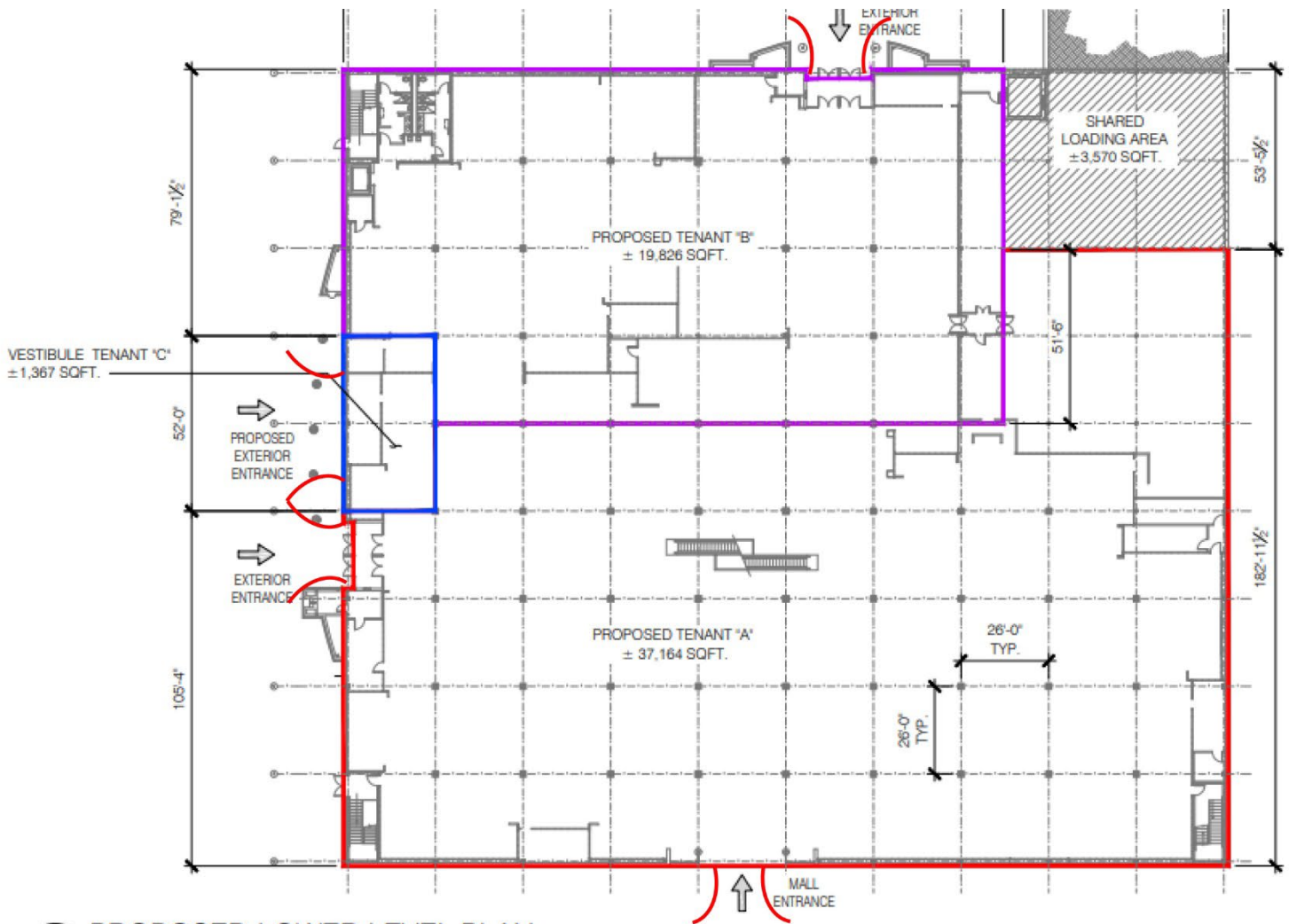


AVAILABLE

Rivertown Crossings, Former Sears

3622 Rivertown Parkway, Grandville, MI 49418

PROPOSED FIRST FLOOR PLAN 2



1 PROPOSED LOWER LEVEL PLAN
LOD1



SCALE: NTS

ALEX BIERI 313.552.4002 alex@sbre1.com
JIM BIERI 313.552.4001 jbieri@sbre1.com

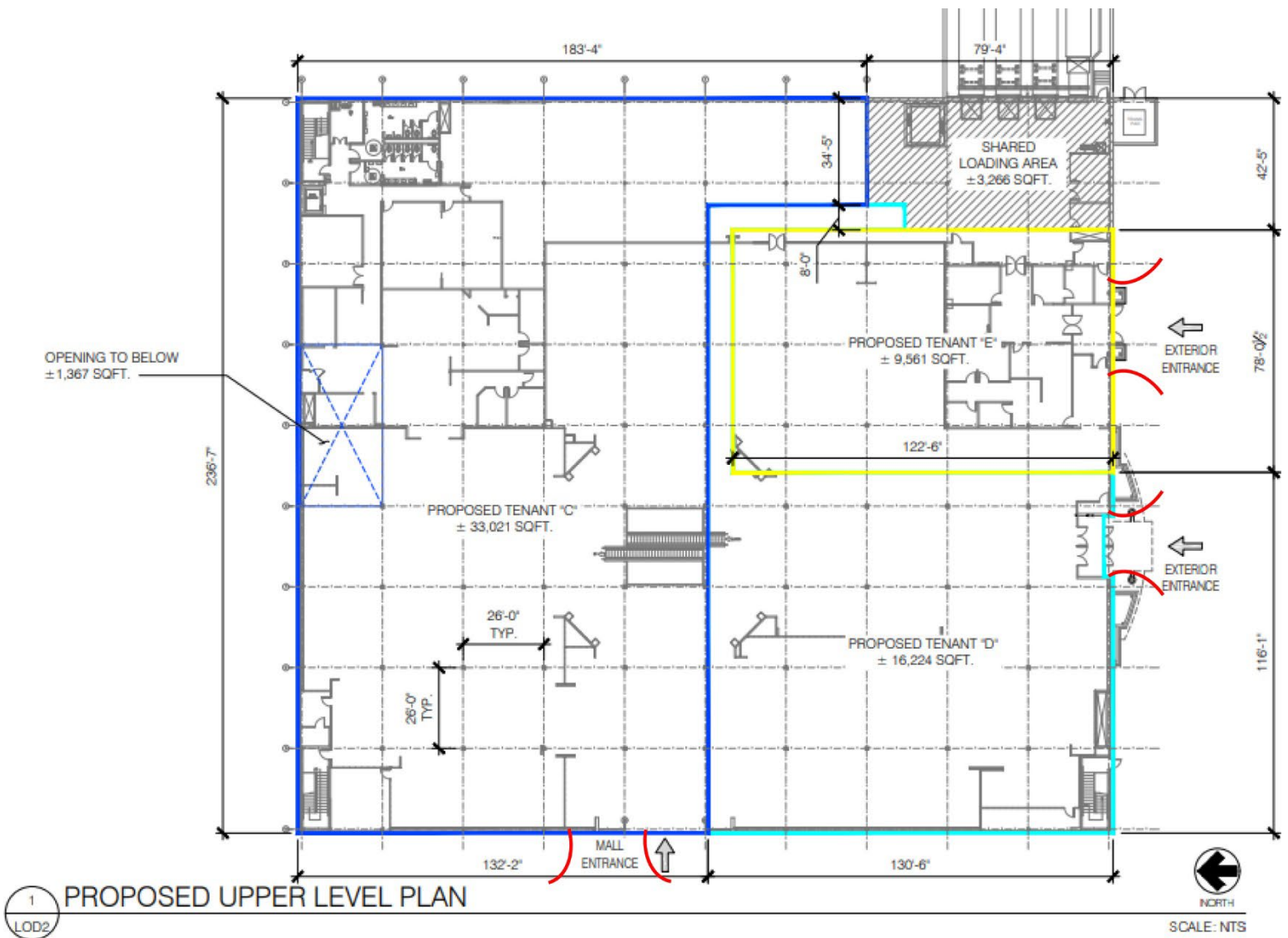


AVAILABLE

Rivertown Crossings, Former Sears

3622 Rivertown Parkway, Grandville, MI 49418

PROPOSED SECOND FLOOR PLAN 2



ALEX BIERI 313.552.4002 alex@sbre1.com
JIM BIERI 313.552.4001 jbieri@sbre1.com

