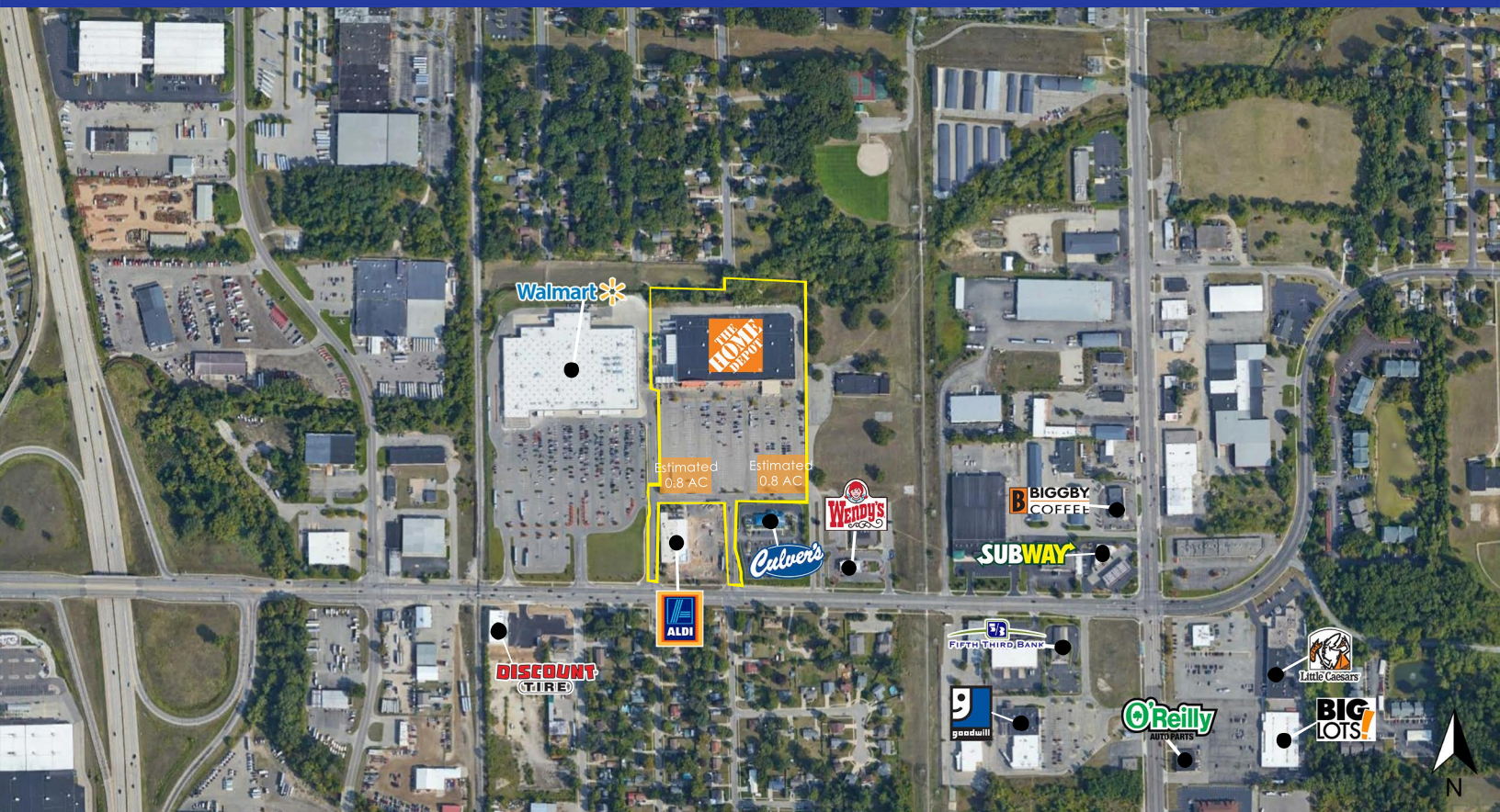


FOR SALE

Home Depot Outparcel
257 54th St. SW, Wyoming, MI 49548



DETAILS

LAND 2 ± 0.8 acres
DAILY TRAFFIC 26,616
COUNT (54th St.)



Area Demographics	1 Mile	3 Miles	5 Miles
Est Population (2019)	5,630	86,750	211,746
Average HH Income	\$62,514	\$73,208	\$74,578
Total Housing Units	2,928	35,238	84,985

Property Highlights

- Site located on N side of 54th Street SW, W of Division.
- Nearby retailers include: Home Depot, Aldi, Target, Big Lot's, Discount Tire, Walmart, Goodwill, O'Reilly Auto Parts, Fifth Third Bank, Menard's, Meijer, Belle Tire, Chick-Fil-A, Chili's, PNC Bank, Steak and Shake, Sonic, Panera Bread, Wendy's, Subway, Culver's, and Biggby Coffee.

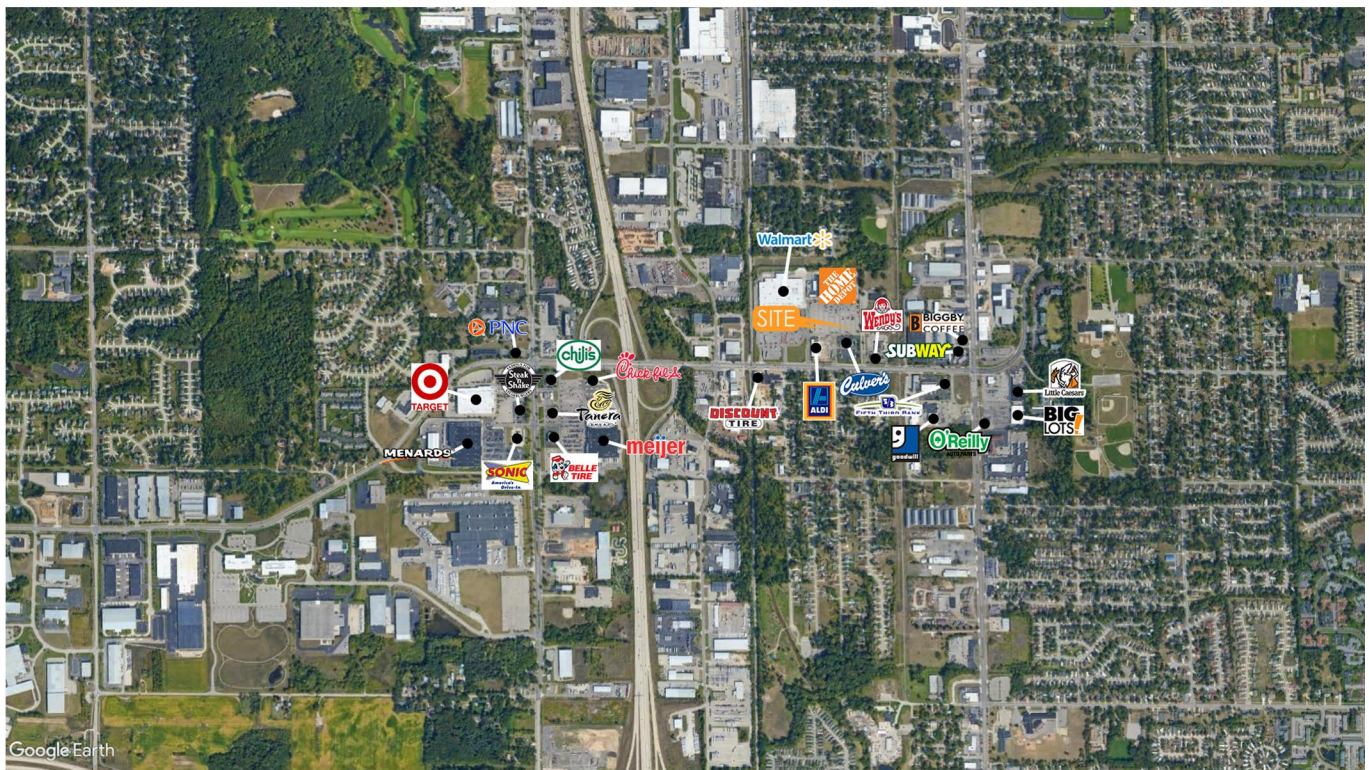
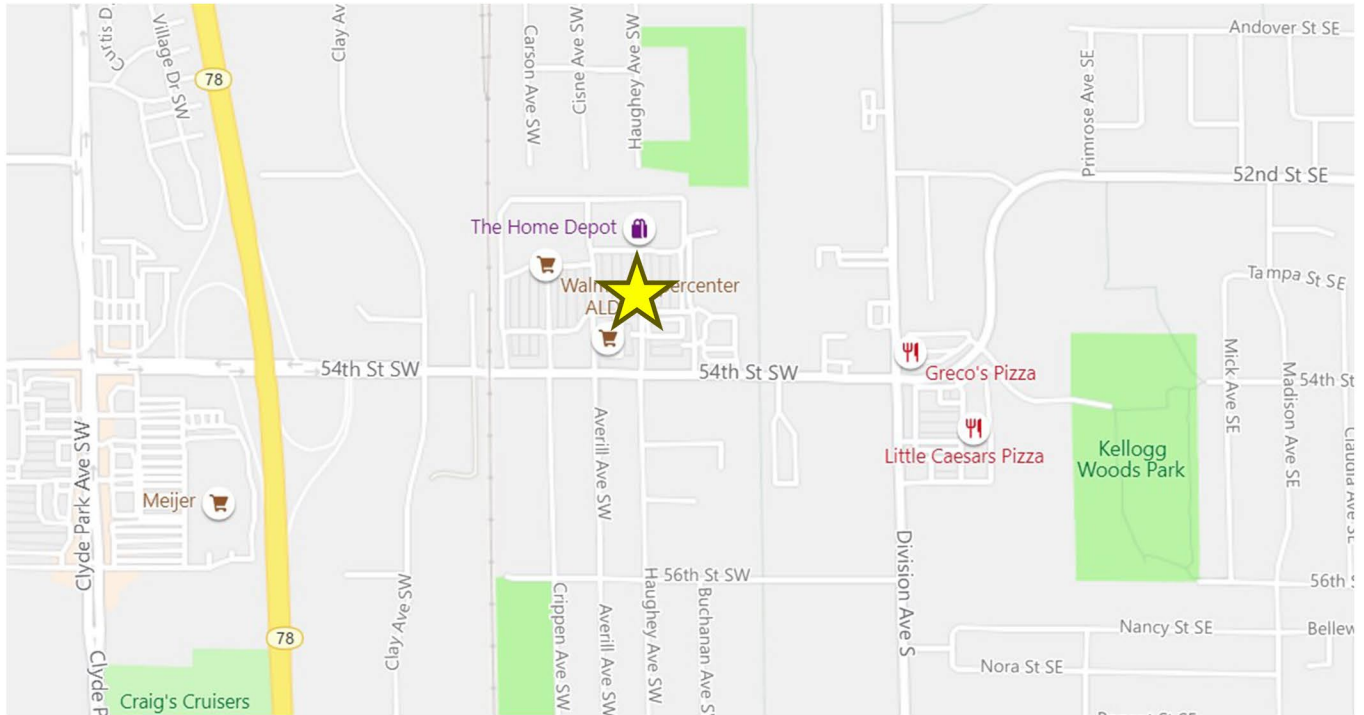
JIM STOKAS 248.351.6280 jstokas@sbre1.com
SEAN VON SCHWARZ 313.595.1064 svonschwarz@sbre1.com



SBRE // Stokas Bieri Real Estate // 660 Woodward Ave. // Suite 1500 // Detroit MI 48226 // 313.962.2800 // stokasbieri.com
No warranty or representation, expressed or implied, is made as to the accuracy of the information contained herein, and same is submitted subject to errors, omissions, change of price, rental or other conditions, withdrawal without notice, any special list conditions imposed by our Principals.

FOR SALE

Home Depot Outparcel
257 54th St. SW, Wyoming, MI 49548



JIM STOKAS 248.351.6280 jstokas@sbr1.com
SEAN VON SCHWARZ 313.595.1064 svonschwarz@sbr1.com



SBRE // Stokas Bieri Real Estate // 660 Woodward Ave. // Suite 1500 // Detroit MI 48226 // 313.962.2800 // stokasbieri.com
No warranty or representation, expressed or implied, is made as to the accuracy of the information contained herein, and same is submitted subject to errors, omissions, change of price, rental or other conditions, withdrawal without notice, any special list conditions imposed by our Principals.